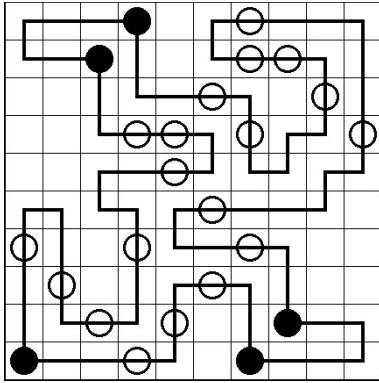
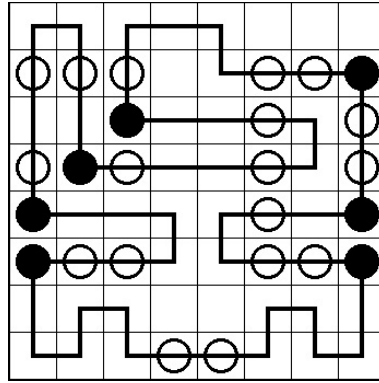


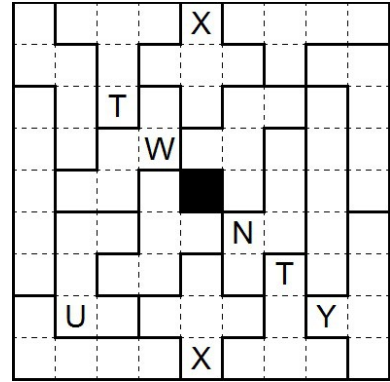
1. Masyu



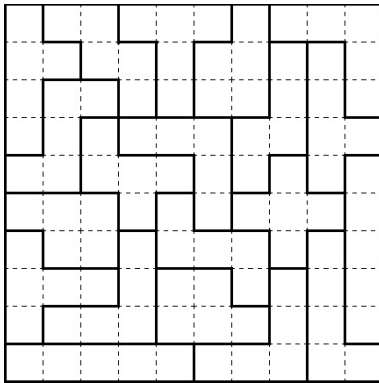
2. Variables Masyu



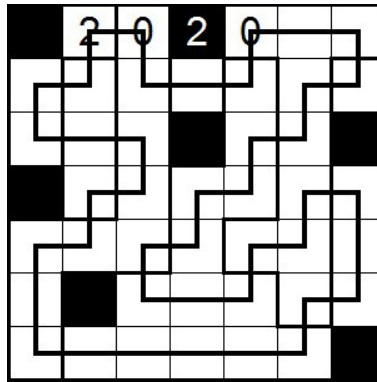
3. Pentominous



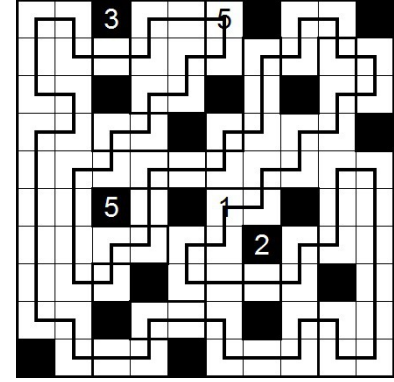
4. Borders-Pentominous



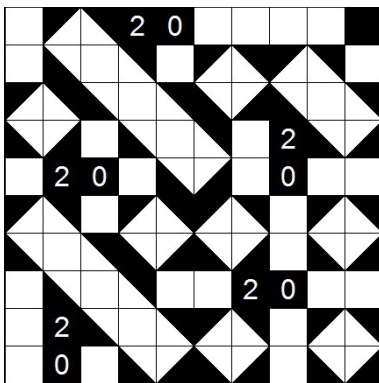
5. Regionales Yajilin 1



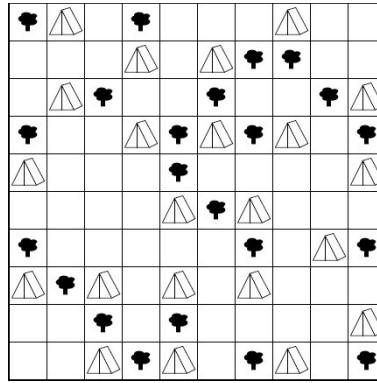
6. Regionales Yajilin 2



7. Shakashaka



8. Zeltlager



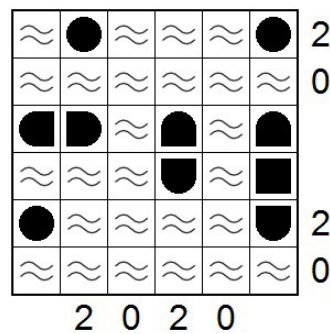
9. Fillomino

7	4	4	1	4	9	9	9	9
7	4	3	3	4	9	3	3	9
7	4	3	4	4	9	3	9	9
7	7	2	5	5	6	6	2	2
7	7	2	3	5	5	6	6	6
2	2	3	3	5	2	2	1	6
3	3	4	2	6	6	3	6	1
3	4	4	2	6	3	3	6	6
1	4	6	6	6	1	6	6	6

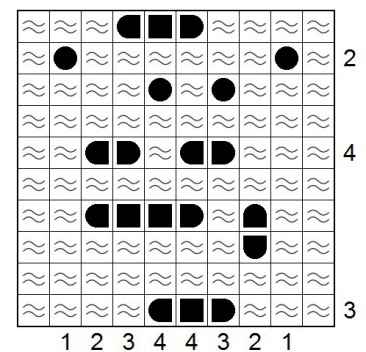
10. Kariertes Fillomino

20	20	20	20	5	5	5	20	20
20	20	20	7	2	5	20	20	20
20	7	7	7	2	5	20	7	20
20	7	1	7	7	20	20	7	20
20	20	2	20	20	20	7	7	20
20	20	2	20	7	7	3	7	20
20	20	20	3	2	7	3	7	20
2	20	3	3	2	7	3	7	20
2	20	20	20	7	7	7	20	20

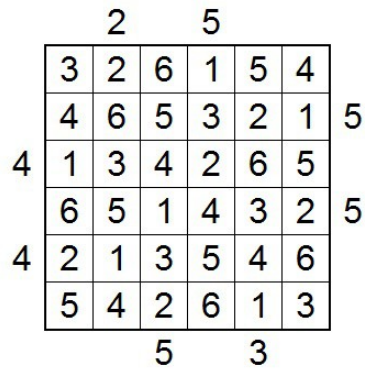
11. Schiffe Versenken 1



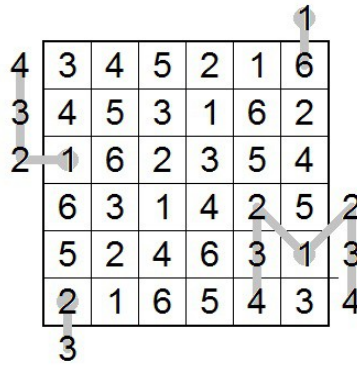
12. Schiffe Versenken 2



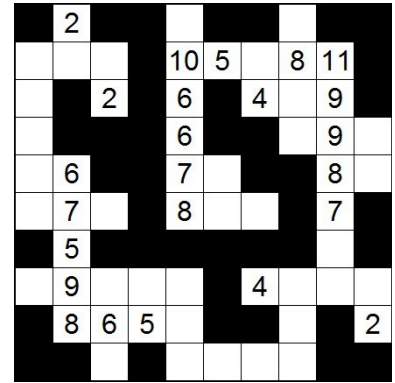
13. Hochhäuser



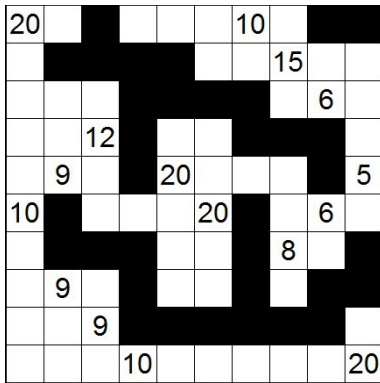
14. Thermo-Hochhäuser



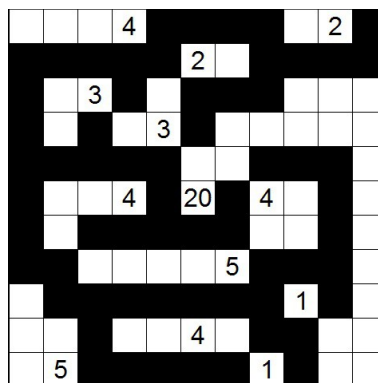
15. Höhle



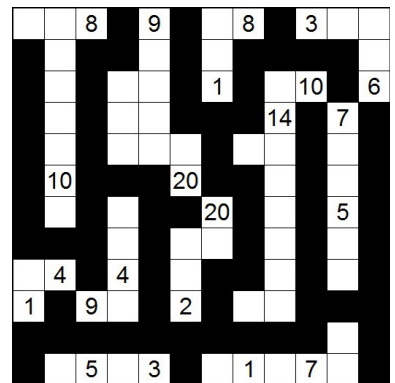
16. Produkt-Höhle



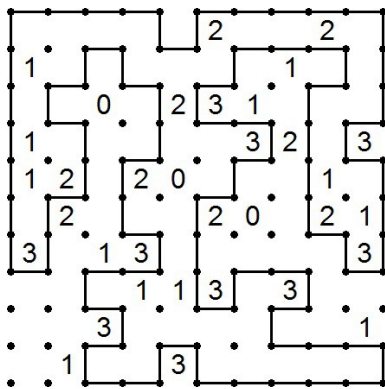
17. Nurikabe



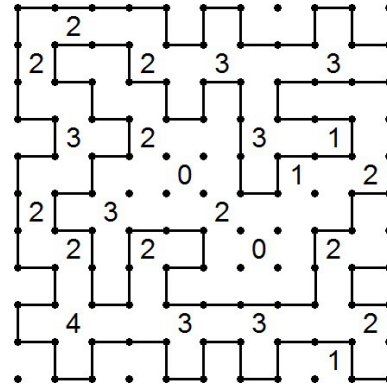
18. Nuraf



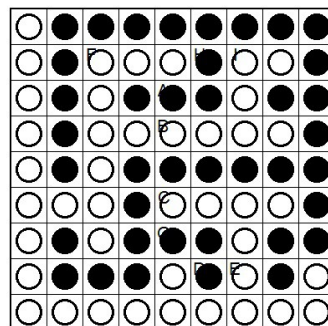
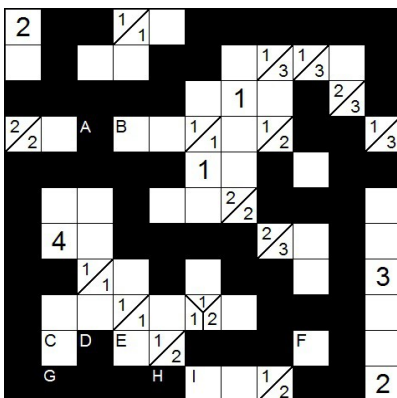
19. Rundweg



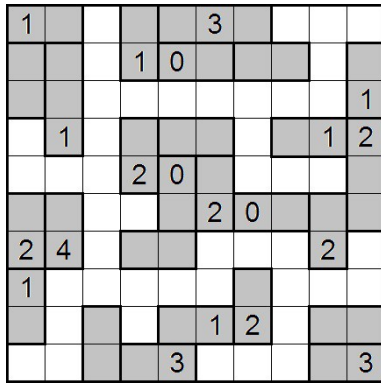
20. Berührungsrundweg



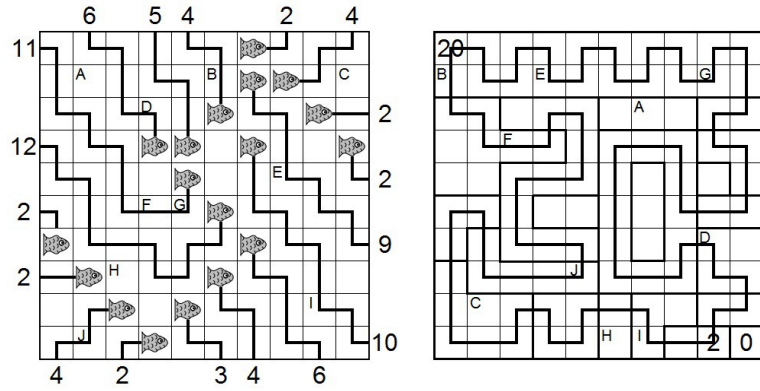
21. Tapa & YinYang-Kombination



30. Ghost Tren



31. Angler & Country Road – Kombination



Rätselautoren:

Jonas Gleim: 2, 3, 4, 5, 6, 7, 8, 10, 11, 12, 14, 16, 19, 22, 25, 26, 30

Florian Habermann: 1, 9, 13, 15, 17, 18, 20, 21, 23, 24, 27, 28, 29, 31