

Logic Masters 2019

Round 2 – Metamorphosis

Time: 35 minutes

2.1 Coral	35 points
2.2 No Islands Tapa	45 points
2.3 Tapasyu	15 points
2.4 Pentomino Masyu	25 points
2.5 Pentomino Galaxies	35 points
2.6 Galaxies	35 points

Total190 points

Bonus for every 30 seconds remaining2 points

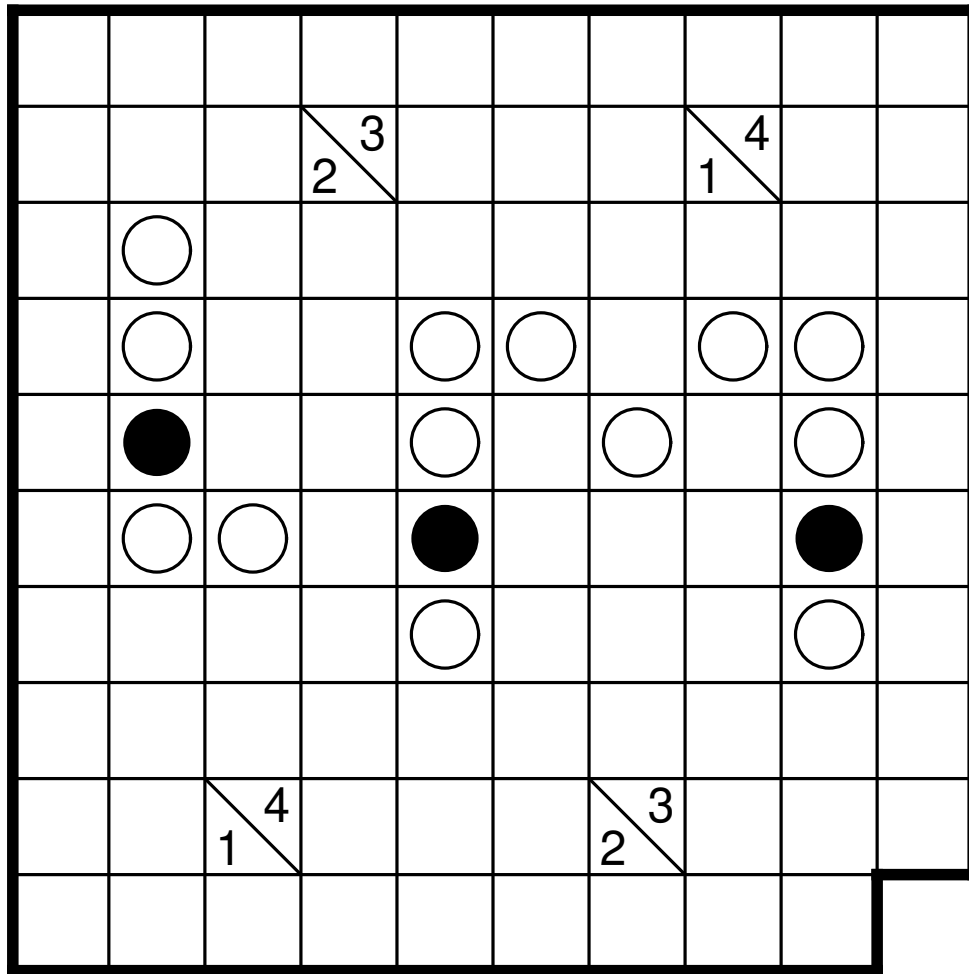
PUNKTE



2.3 Tapasyu

15 Punkte

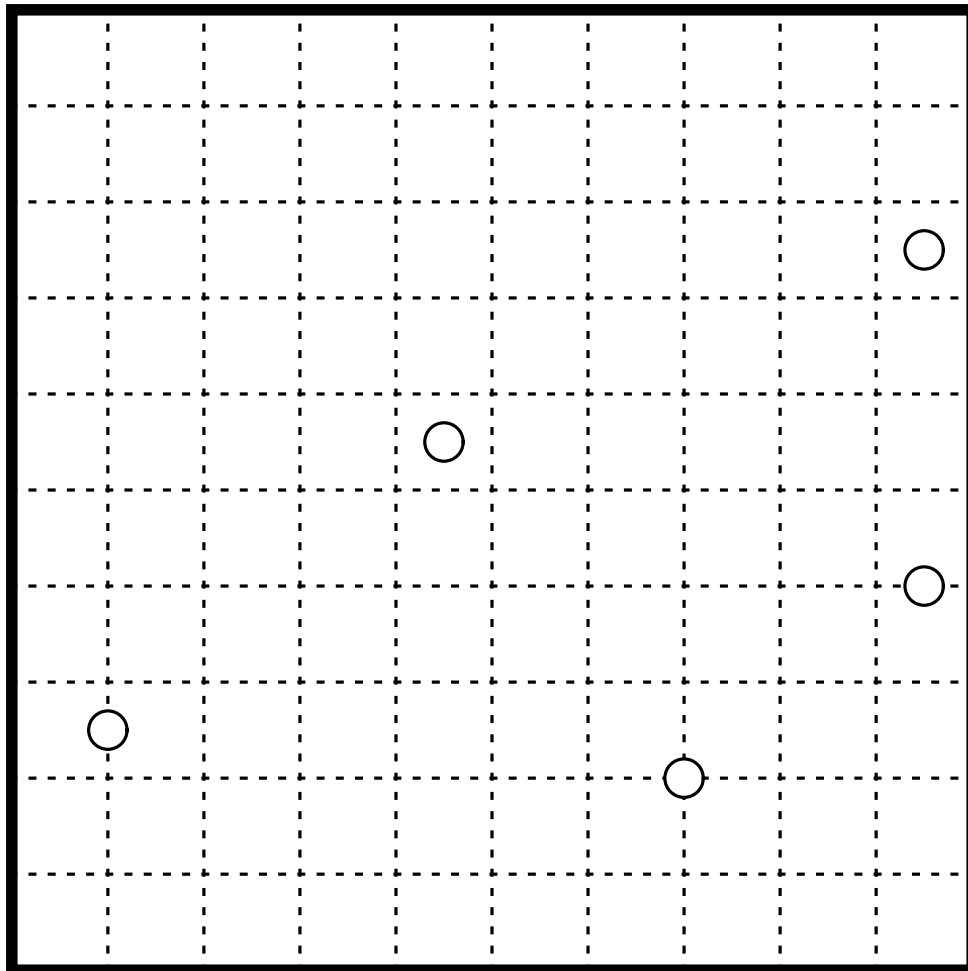
Draw a loop into the grid that connects the centers of horizontally or vertically adjacent cells, passing every cell at most once, but no cells containing numbers. The loop visits every cell with a circle. In cells with white circles the loop keeps straight on but turns in at least one of the adjacent cells (following the loop). In cells with black circles the loop turns but keeps straight on in both adjacent cells. Numbers determine how many of the eight adjacent cells are used by the loop. Each number represents one group of connected cells used by the loop. Such a group cannot be interrupted by empty cells, but does not need to form a contiguous part of the loop. Distinct groups around the same cell must be separated by at least one empty cell. The order of numbers in a cell does not matter.



2.5 Pentomino Galaxies

35 Punkte

Place some pentominoes in the grid, such that they do not touch each other, not even diagonally. No pentomino may appear twice. Rotated or mirrored pentominoes are considered equal. Not all pentominoes need to be used and it is not given which pentominoes are used. Dissect the remaining cells into regions such that every region contains exactly one white circle. Every region is point symmetrical with respect to its circle.



2.6 Galaxies

35 Punkte

Dissect the grid into regions such that every region contains exactly one white circle. Every region is point symmetrical with respect to its circle.

