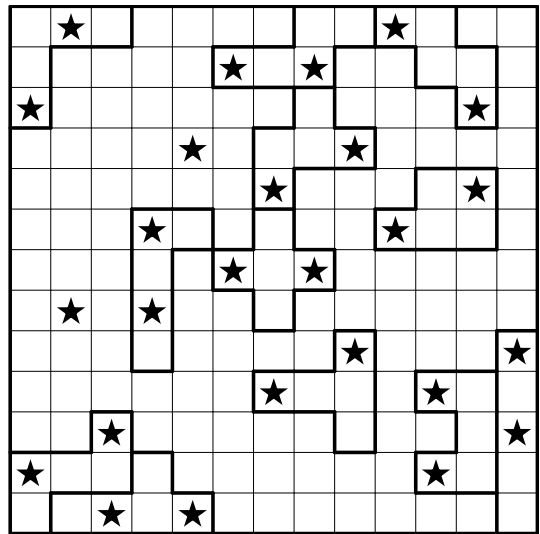


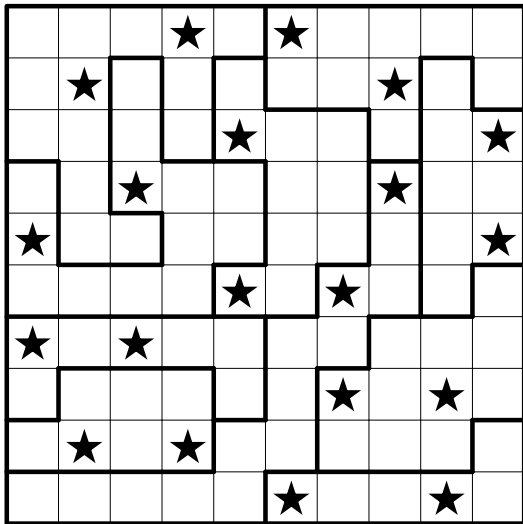
# Lösungen zur Logic-Masters-Qualifikation 2019

A	B	C	D	E	F
2	6	10	14	15	18
G	H	I	K	L	N
7	11	17	12	8	16
S	U	V	X	Y	Z
4	13	9	5	3	1

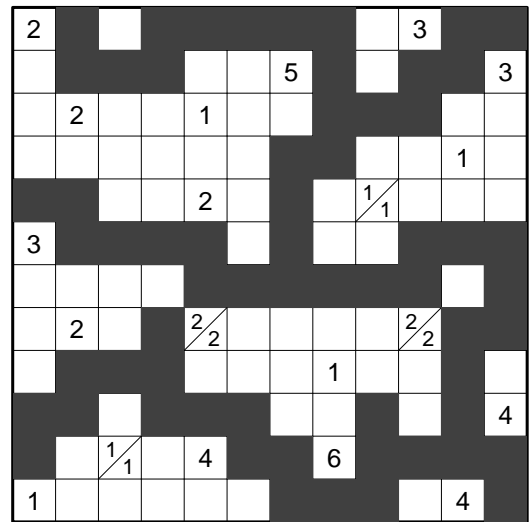
1. ABCtje



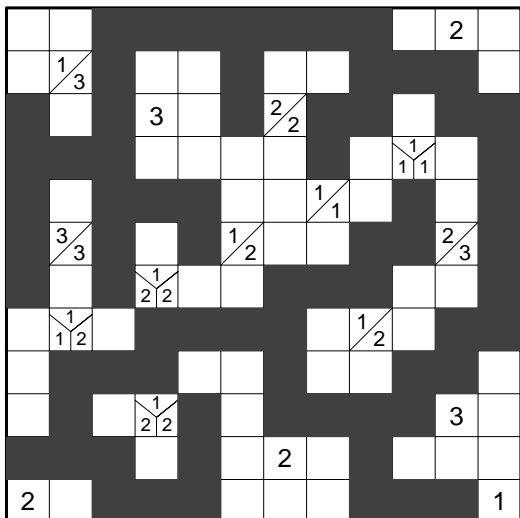
2. Doppelstern A



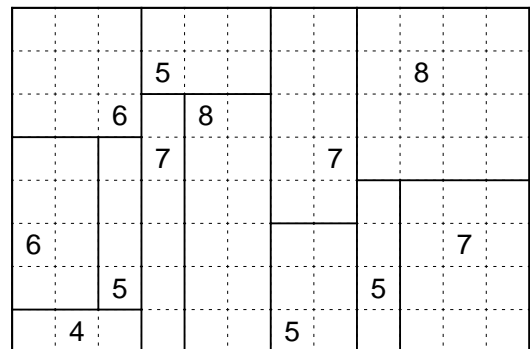
3. Doppelstern B



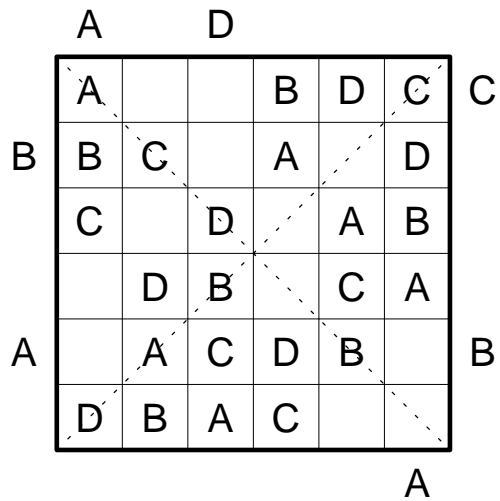
4. Tapa A



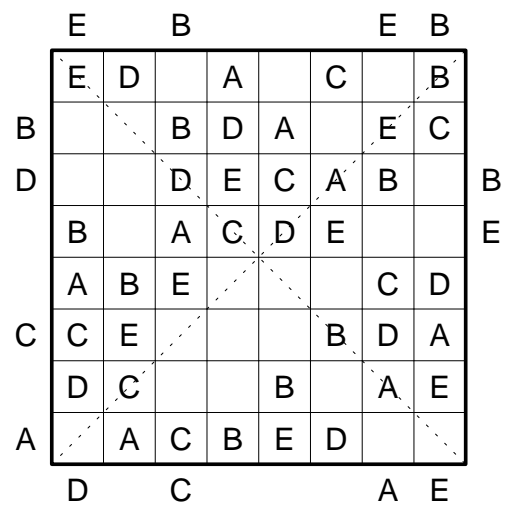
5. Tapa B



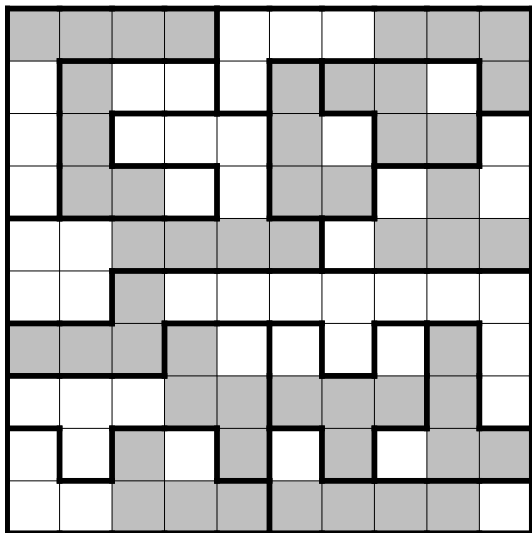
6. Rekuto



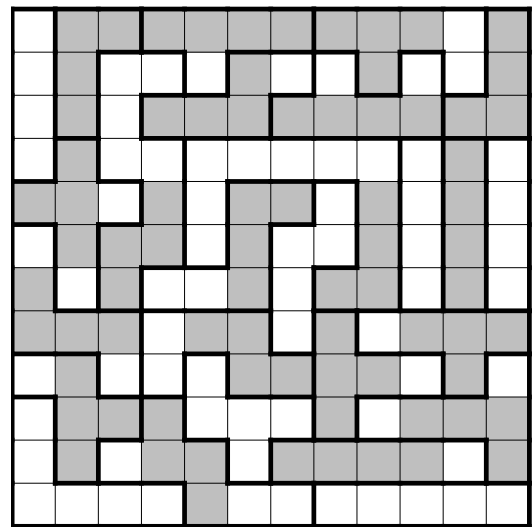
7. Buchstabensalat mit Diagonalen A



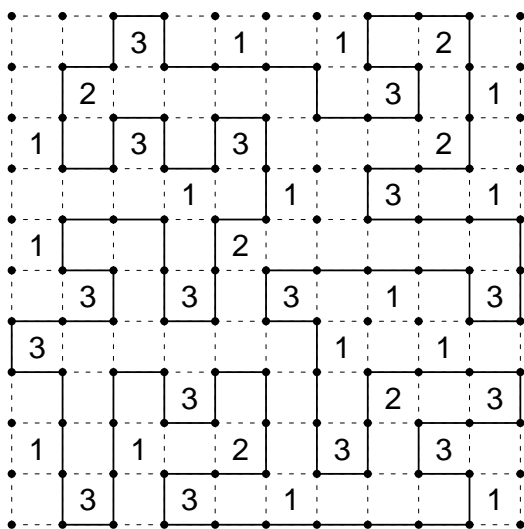
8. Buchstabensalat mit Diagonalen B



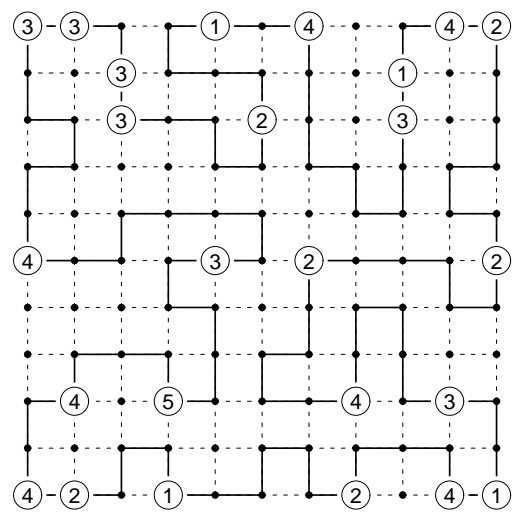
9. LITS



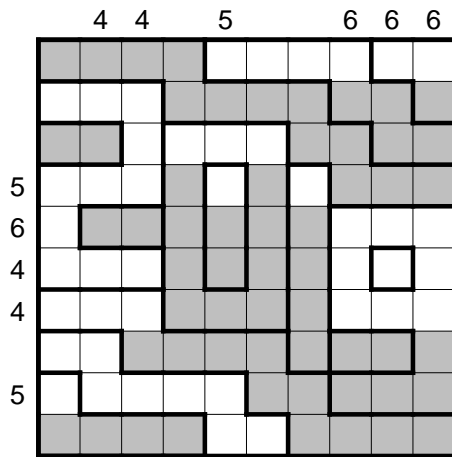
10. LITS+



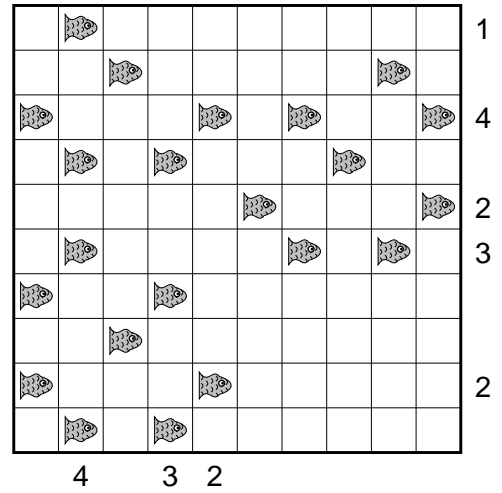
11. Rundweg



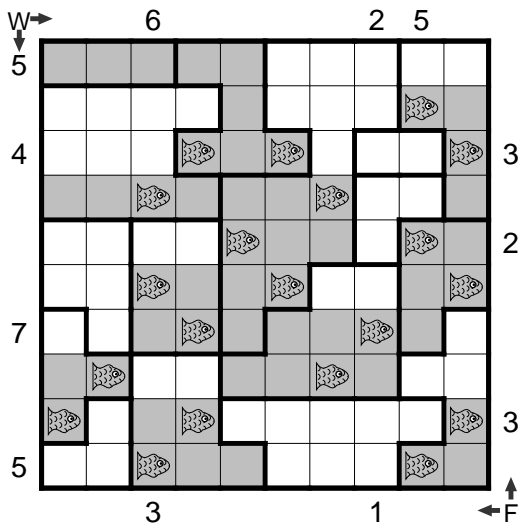
12. Kongruenzrundweg



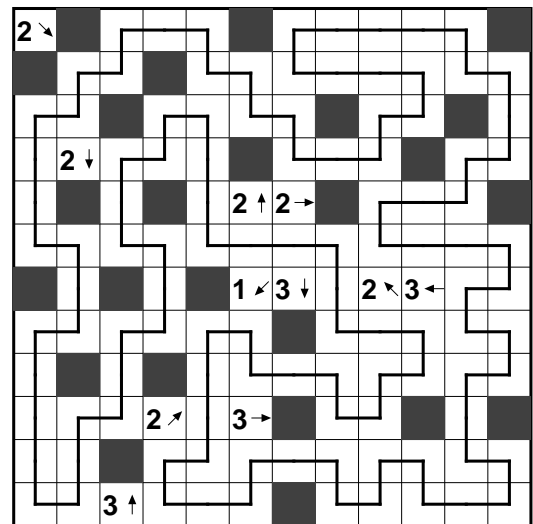
13. Aquarium



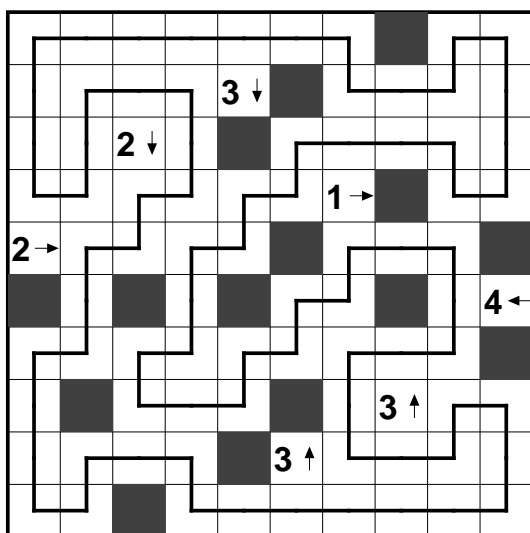
14. Fischpaare



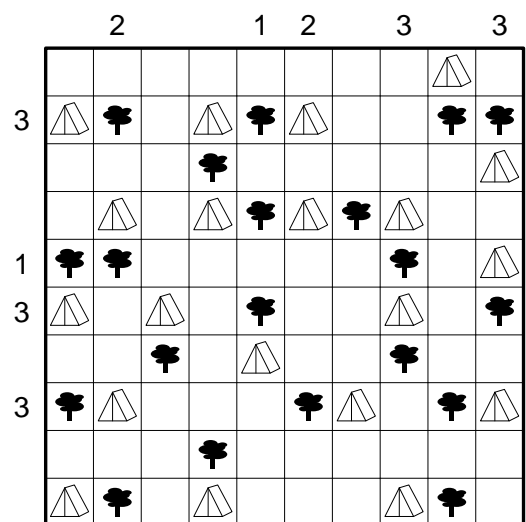
15. Fischpaare im Aquarium



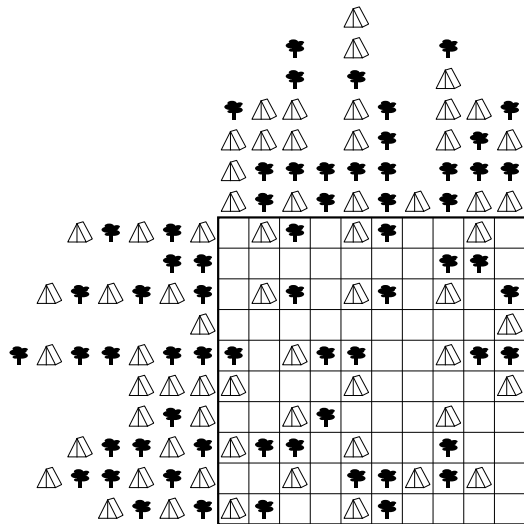
16. Yajilin A



17. Yajilin B



18. Zeltlager



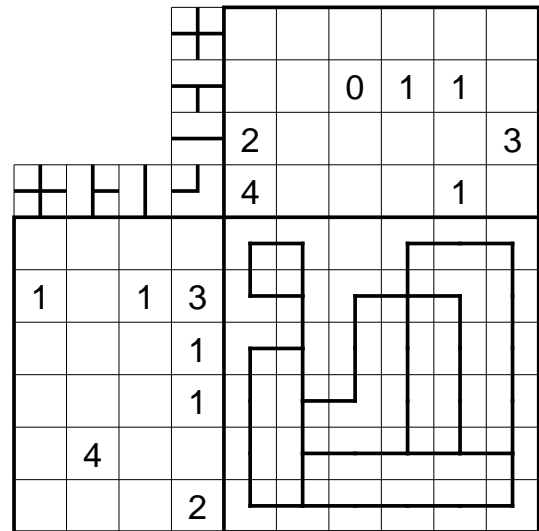
19. Zeltlager-Rekonstruktion

Y	U	L	N	I	P	I	P	U	Z
N	P	F	W	X	Z	T	V	W	F
I	Z	Y	T	L	W	X	F	T	L
Y	U	W	X	N	F	V	I	X	V
L	T	F	P	Y	X	P	V	Z	I
N	U	L	Y	W	Z	N	T	V	U

20. Anti-Buchstaben-Pentomino-Zerlegung

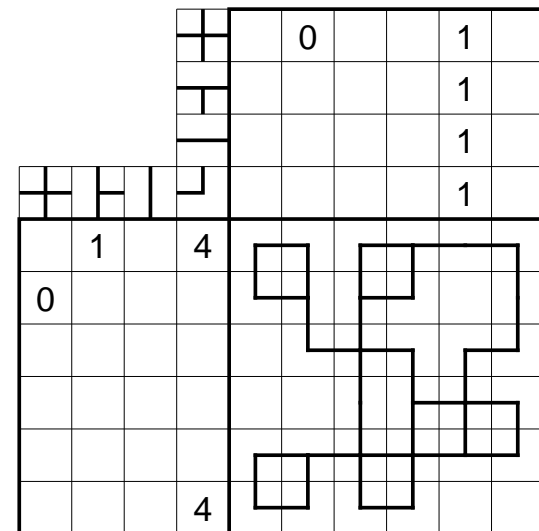
		4		4		
4	1	4	3	5	6	2
	6	5	2	4	1	3
	3	2	1	6	5	4
	5	6	4	3	2	1
4	2	3	5	1	4	6
	4	1	6	2	3	5
			3		4	

21. Hochhäuser



22. U-Bahn

		2	4		4	
3	6	5	1	4	2	3
	3	1	2	5	4	6
	4	2	3	6	5	1
	1	4	6	2	3	5
	5	6	4	3	1	2
	2	3	5	1	6	4
						2
						4
						2



23. U-Bahn unter Hochhäusern

		6	8					4	5	
		6	10	7				6	13	6
		5	2	5	20	19		5	3	7
9	9	6	3						4	5
			5	1				6		
6	5	6		6		5			2	4
7	7	7	1	6		4	3		5	2
7	6	6	3	4		5	1		6	
			2			3	6			1
		21			5	2	4	1	3	6
7	6	4	5	2		6		4		

24. Japanische Summen

				D				L					
				D	ST	E	SM	V					
				IT	IT	D	M	SI	E	E	SD	ST	
				SM	SD	E	L	L	M	A	IT	IM	
	SL	SD			1	6	2	8			7	5	4
A	E	L	V		4		8			7		3	6
					4	2	5			6	1	8	
V	I	E	L		3	5	1		2		8		7
	SP	A	SS		7	8		3	1			6	5
D	A	M	IT		6		4		3		5	7	8
						7	2		6	8	3	4	1
	SS	L	M		8	3		7				1	2
	SV	SD			5	6	8		7	3	4	2	

25. Japanische Summen (Krypto)