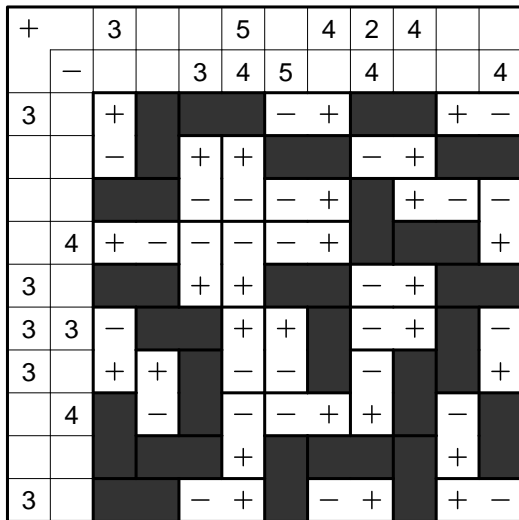
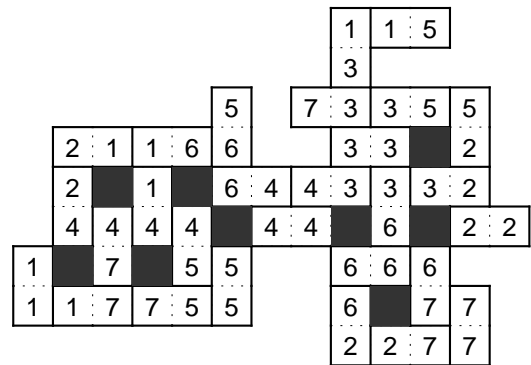


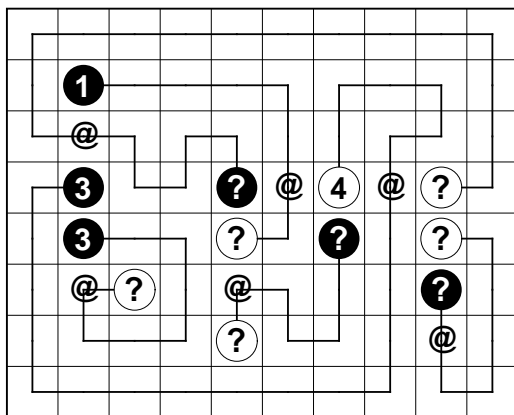
# Lösungen zur Logic-Masters-Qualifikation 2017



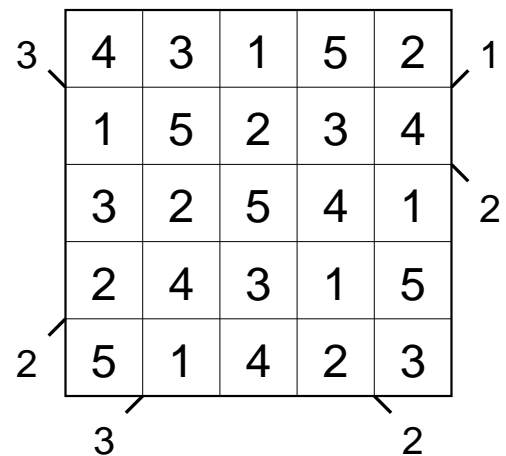
1. Antimagnetplatten



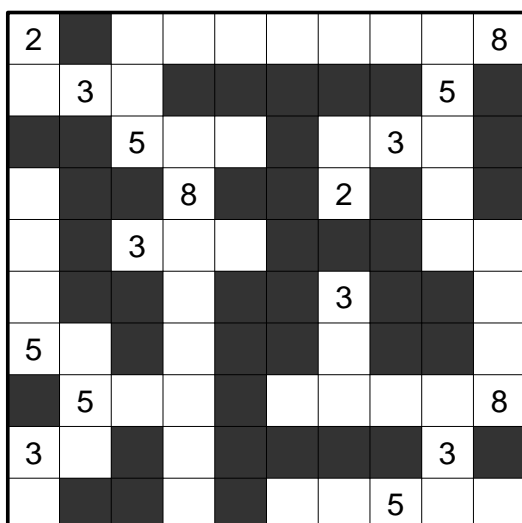
2. Blackout Domino



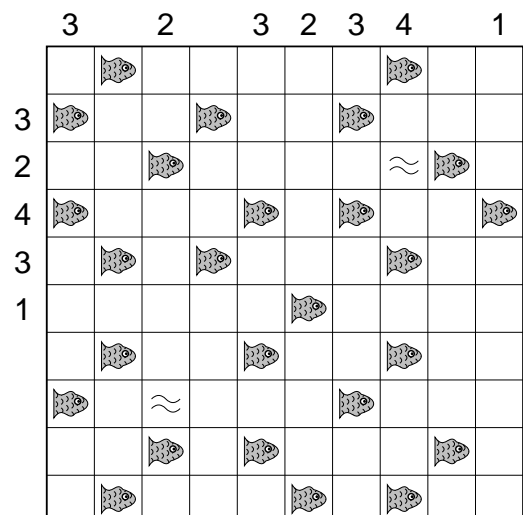
3. Chatroom



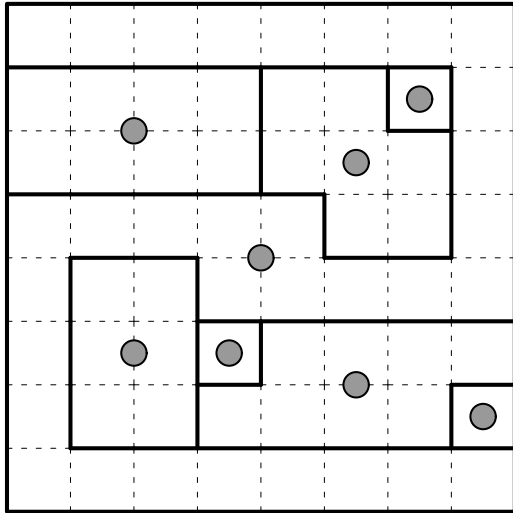
4. Diagonale Hochhäuser



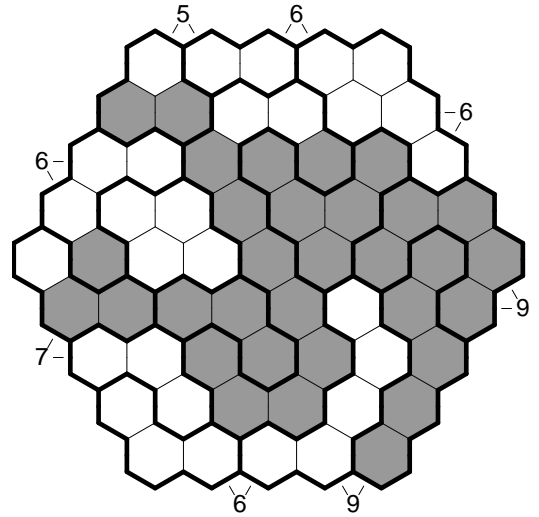
5. Enge Höhle



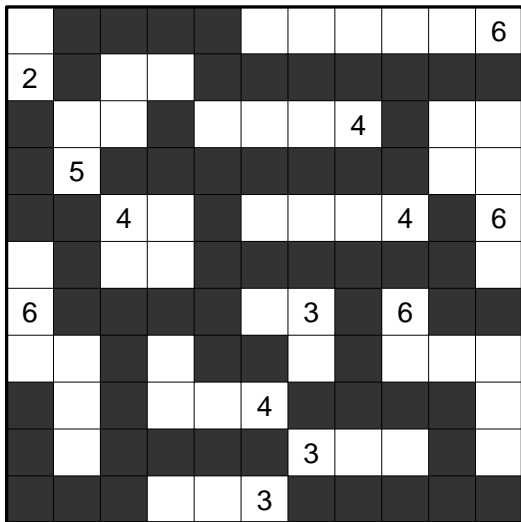
6. Fischpaare knapp daneben



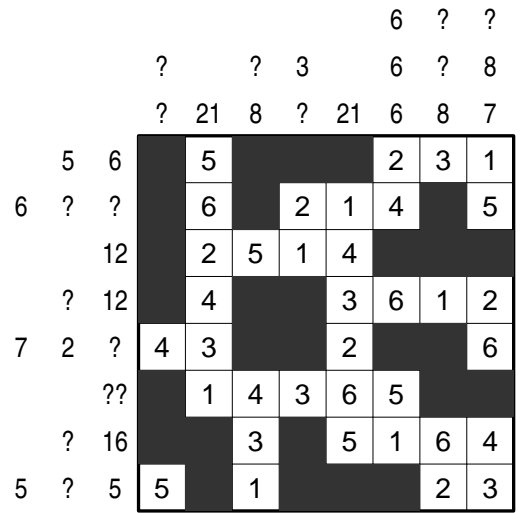
7. Galaxien



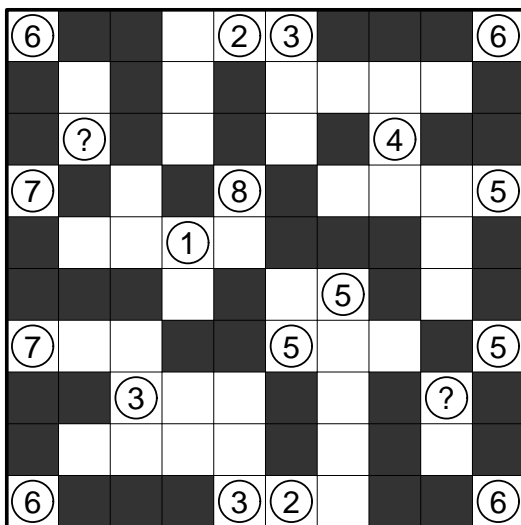
8. Hexagonales Aquarium



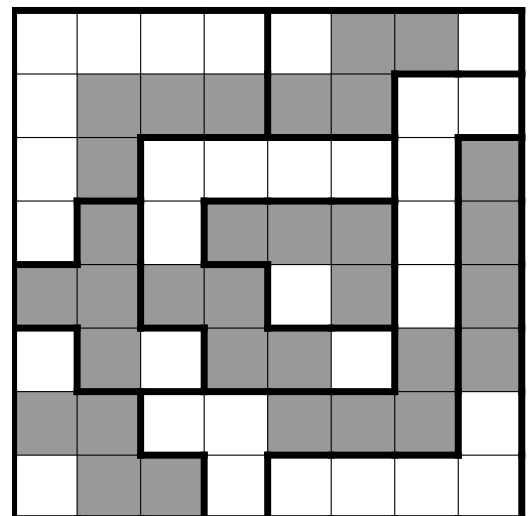
9. Inseln



10. Japanische Tetrominos



11. Kurotto



12. LITS

A	P	R	E	S	1	2
I	L	T	I	S	1	1
K	L	E	I	N	1	1
M	A	L	E	R	0	1
O	S	K	A	R	1	2
P	S	A	L	M	1	2

A	S	P	I	K	5	0
---	---	---	---	---	---	---

13. Masterword

2		1	2		1	3	3	
2	1		2	1			1	3
1		1		2	2			2
2		2			1			1
2		2	3	3	3	2		2
3					1		1	2
3	3	1			2	3	3	
	2		1		2		2	
	2	4	4	4	4	3	2	1

14. Nanro

<b>B2</b>	<b>A4</b>	<b>E1</b>	<b>D3</b>	<b>C5</b>
<b>E3</b>	<b>D5</b>	<b>C2</b>	<b>B4</b>	<b>A1</b>
<b>C4</b>	<b>B1</b>	<b>A3</b>	<b>E5</b>	<b>D2</b>
<b>D1</b>	<b>C3</b>	<b>B5</b>	<b>A2</b>	<b>E4</b>
<b>A5</b>	<b>E2</b>	<b>D4</b>	<b>C1</b>	<b>B3</b>

15. Orthogonales Quadrat

	2							3	
					1/1				
									1/1
						1/2			
3				5					
	2/4						1/3		
				5					1
		1/1							
				2/3					
							1/3		4
			2						

16. Pentominoeinbau mit Berührung

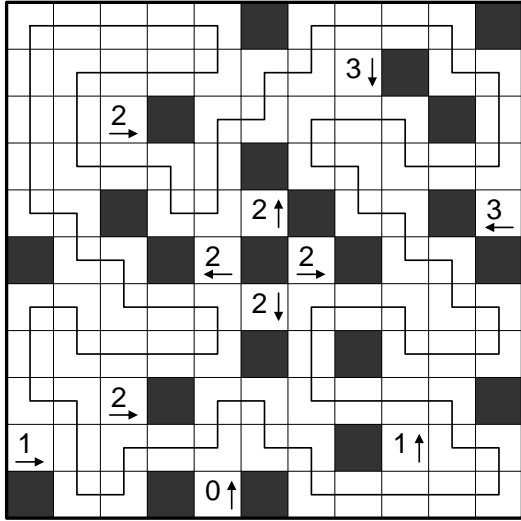
	6		8	9	4	5	8	7	8		6		
	5		6	9	0	6	5	7	10		7		
	4		7	9	9	7	8	7	9		8		
	2	4	7		5	6		3	1				
	7	1		2	3		5	4			6		
8	8	8	4		1	7		5	3		6	2	
			3	5		4			6	2	1	7	
7	8	7	6		2	5		3	4	1		7	
5	4	3		5		4		2	1		7	6	3
6	8	5	5		6		7	1		2	3		4
			7		3	2		6	5		4	1	
9	9	9	1		3	6		7	2		4	5	
			3	6	4		1			7	5		2
			2		1	6	4	7			3	5	

17. Quadrupelblock

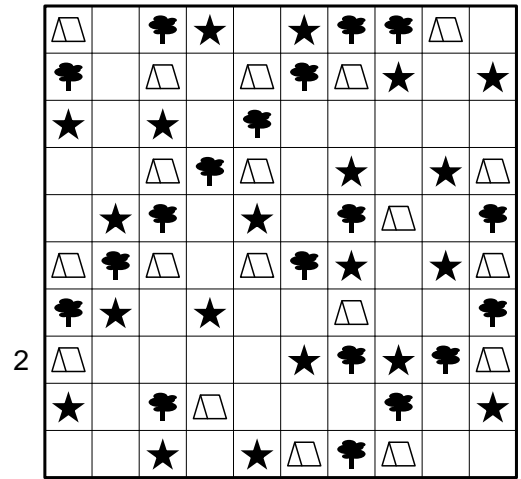
	3				1	0					4
		2		2			1			1	
			0					1			
		3		2			4			3	
	0				3	0					3
	0				4	3					4
		1		3			3			1	
			2					3			
		1		3			1			3	
	0				4	3					3

18. Rundweg außen-Kanten-innen-Ecken





25. Yajilin



26. Zeltlager mit Doppelstern