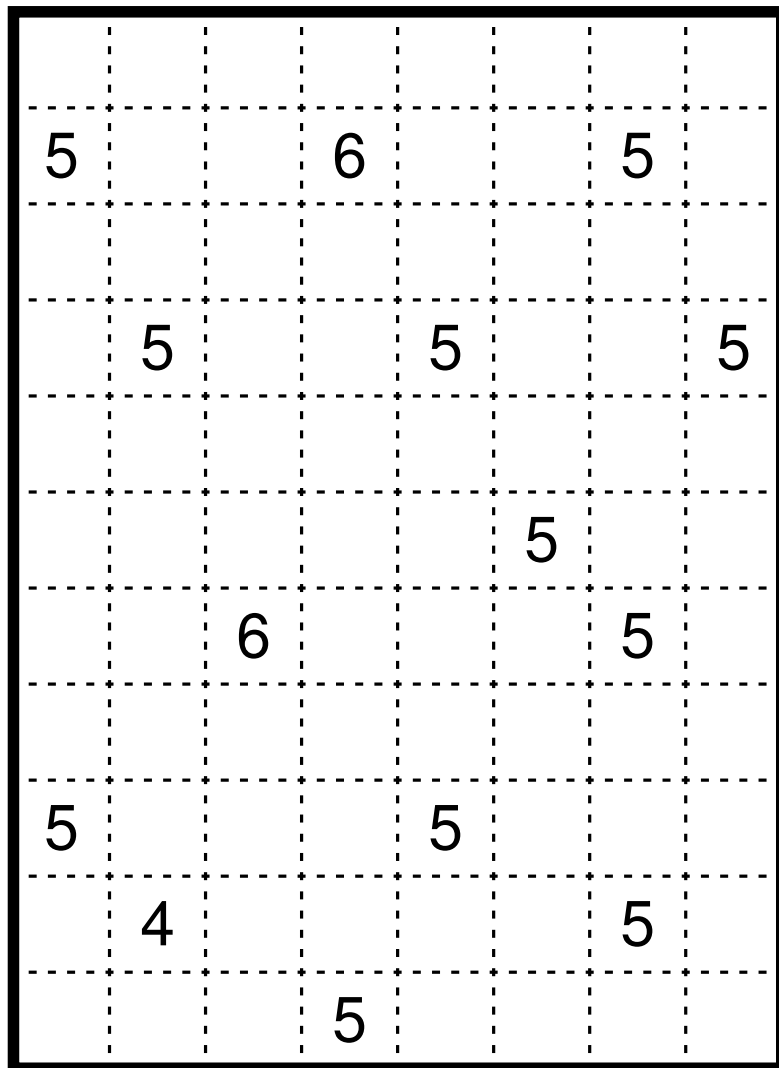


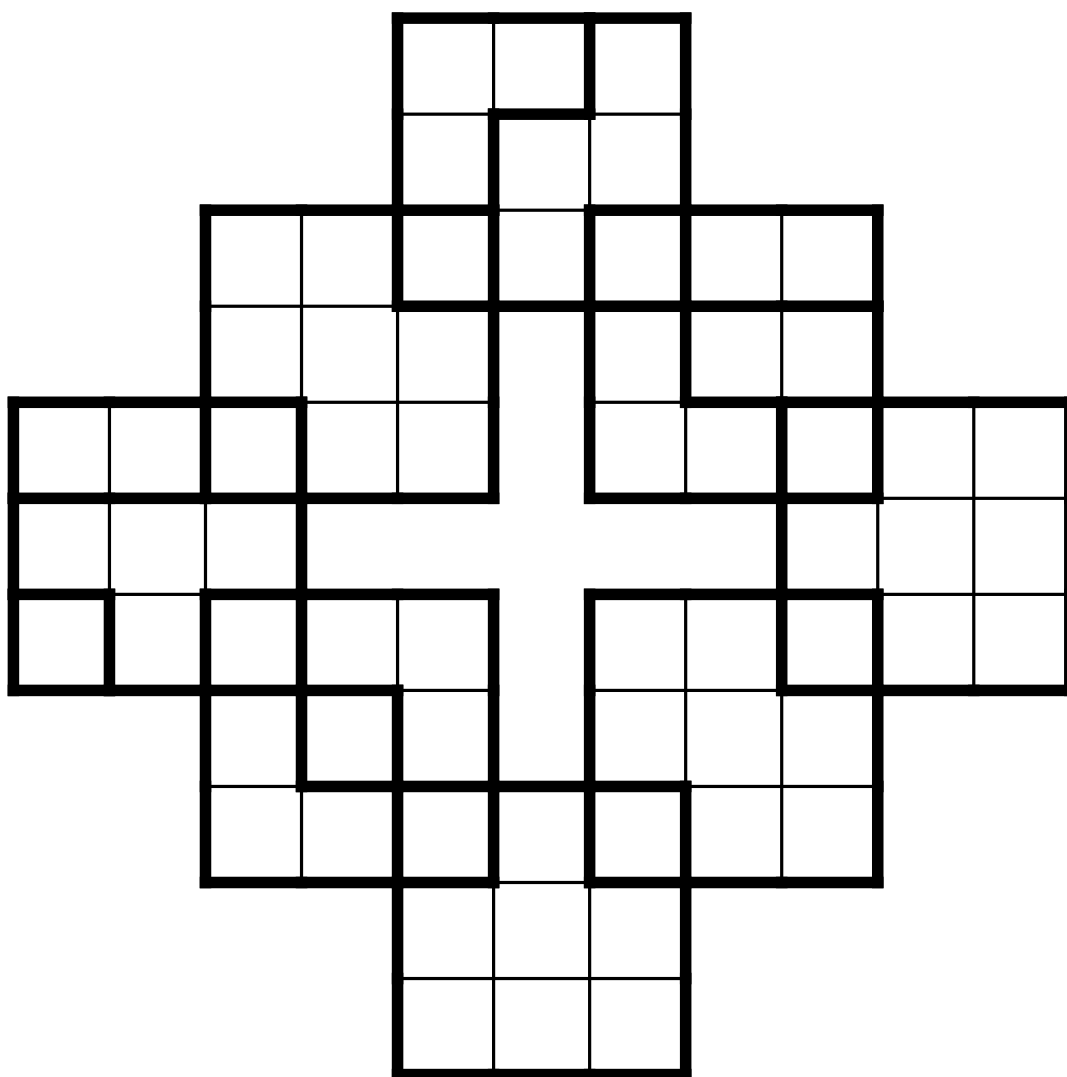
## 8.1 Rekuto – Shooting Gallery

Divide the grid along the dotted lines to create rectangles. Every rectangle contains exactly one number. The number is the sum of the height and width of the rectangle. **Caution:** Only one rectangle is uniquely determined.

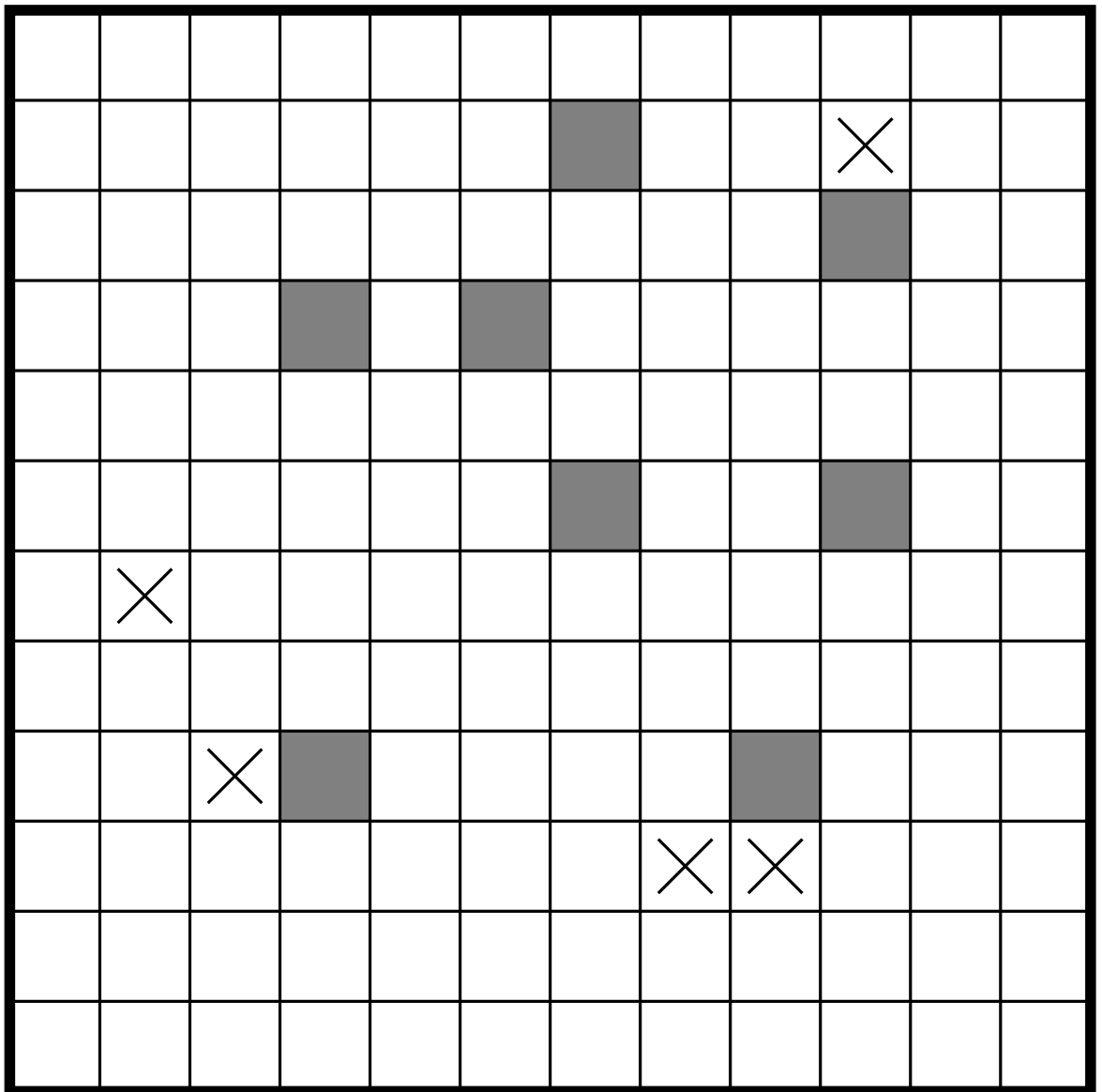
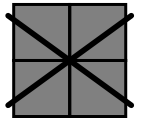
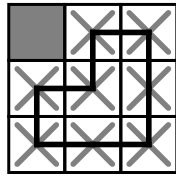
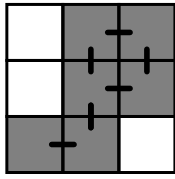


## 8.2 8 Puzzles

The rules are identical to those of Round 6, with the following exceptions: The snake only consists of the numbers 1 to 2, not 1 to 4, starting at 1. The Easy as 123 puzzle contains only the numbers 1 to 2 in every row and column, not 1 to 4, and the outside clues indicate the second instead of the third number in the corresponding row or column, counting from the clue. Additionally, there is no region with more than 6 cells.

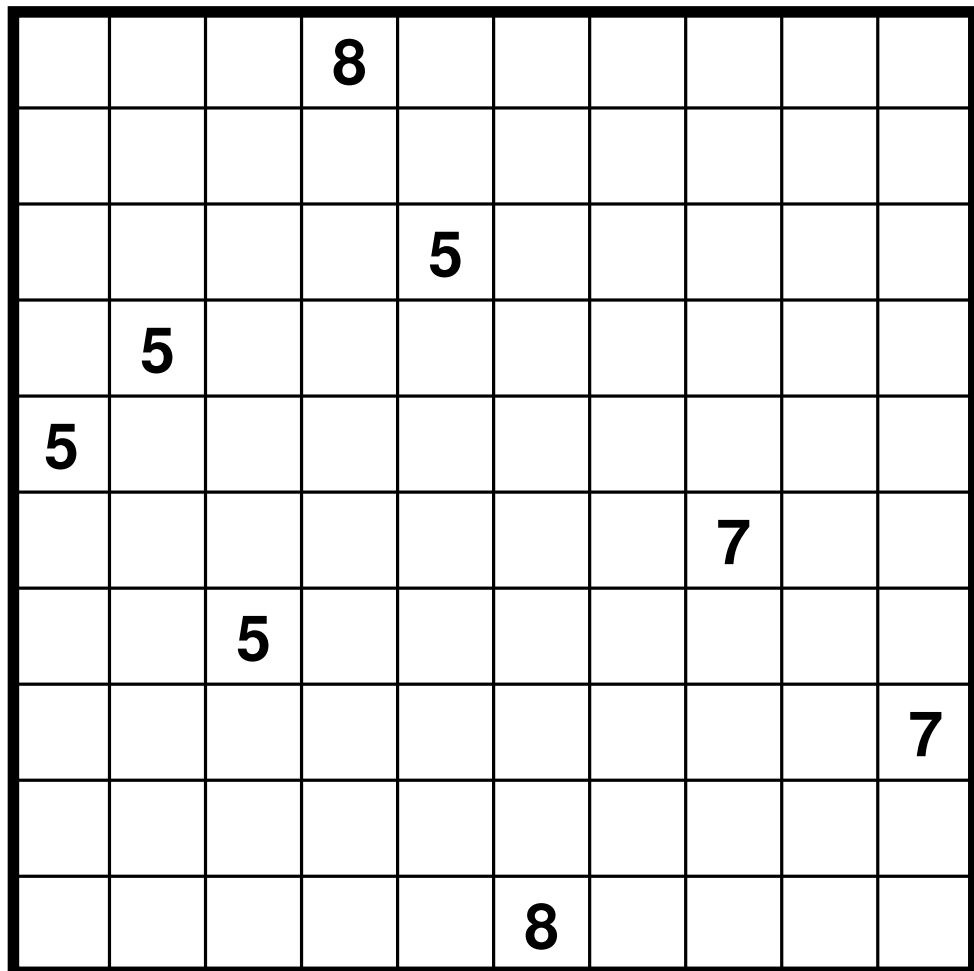


### 8.3 Building Blocks



## 8.4 Lighthouses in the Water

Place ships in some empty cells such that cells with a ship do not touch each other, not even diagonally. Numbers determine how many ships are visible from a lighthouse in this cell, looking straight in horizontal or vertical direction. Ships or lighthouses do not block the view of lighthouses. Every ship can be seen from at least one lighthouse. Cells with a ship may touch cells with a lighthouse.



## 8.5 Domino Pills

Divide the grid into rectangular regions of sizes 2 and 3 such that all dominoes with the numbers 0 to 3 and ten pills with all values from 0 to 9 occur. Pills consists of 3 cells. The value of a pill equals the sum of all numbers inside the pill.

2	3	3	2	2	3	3	0	1	3
3	1	0	3	2	3	0	2	3	3
2	3	2	1	0	1	3	0	3	3
1	0	1	0	0	1	1	0	3	3
0	0	0	1	0	0	0	0	1	3

0	0	0	1	0	2	0	3
1	1	1	2	1	3		
2	2	2	3				
3	3						

0	1	2	3	4
5	6	7	8	9

