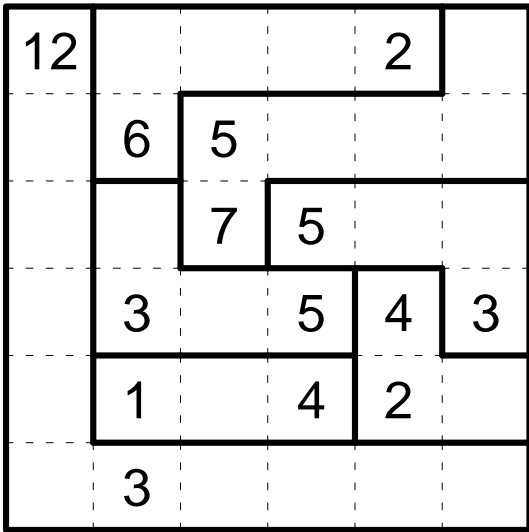
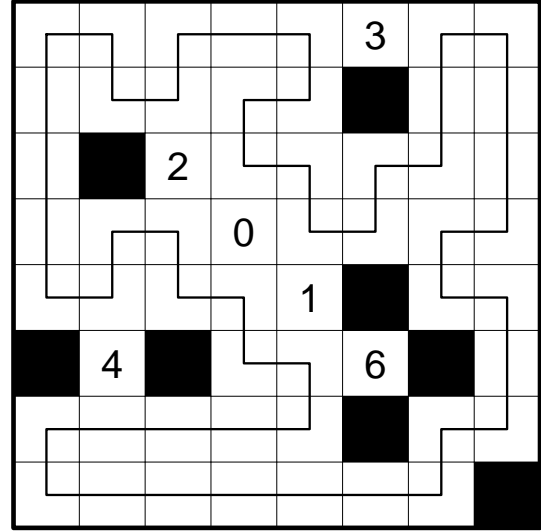


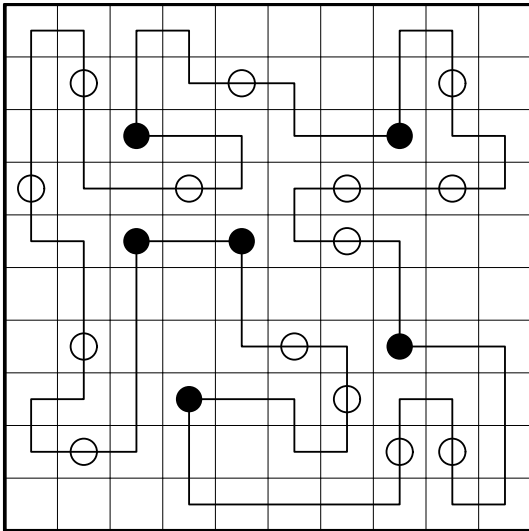
Lösungen zu Runde 4: gemischte Rätsel



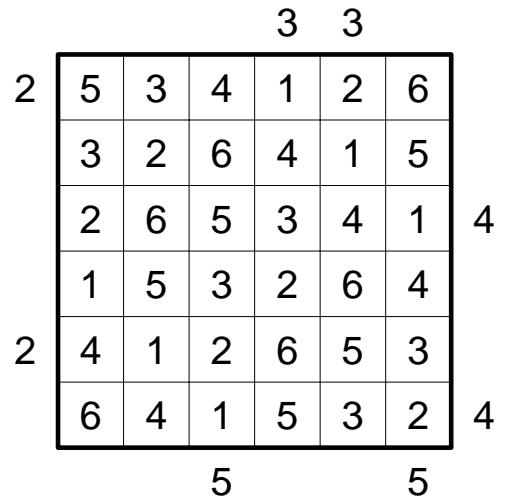
4.1 Araf



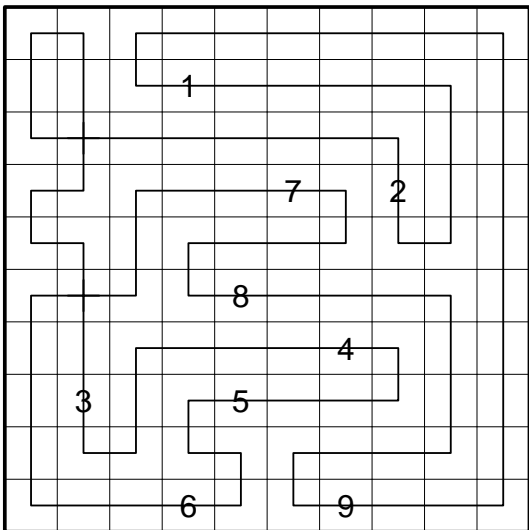
4.2 Totales Yajilin



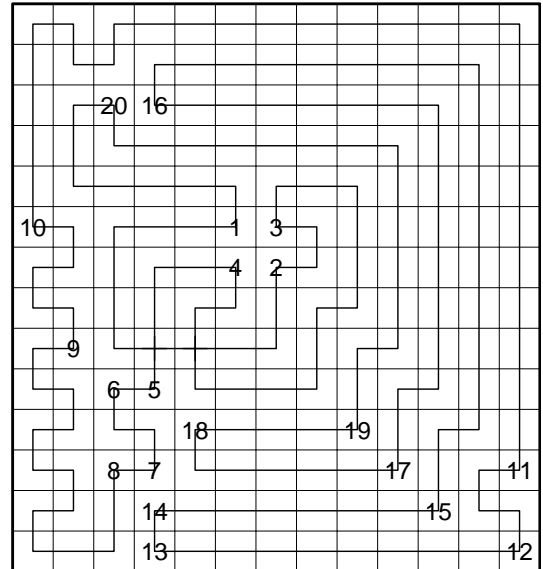
4.3 Masyu



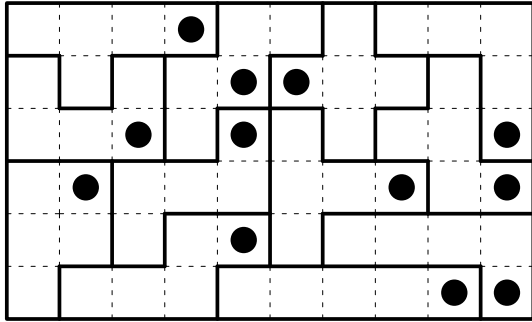
4.4 Hochhäuser



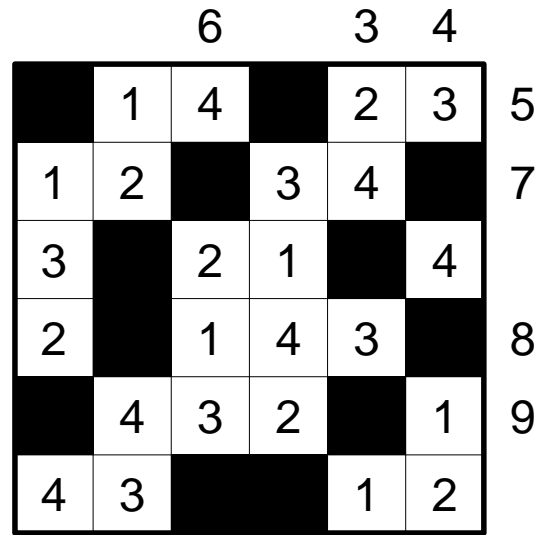
4.5 Bahnhöfe



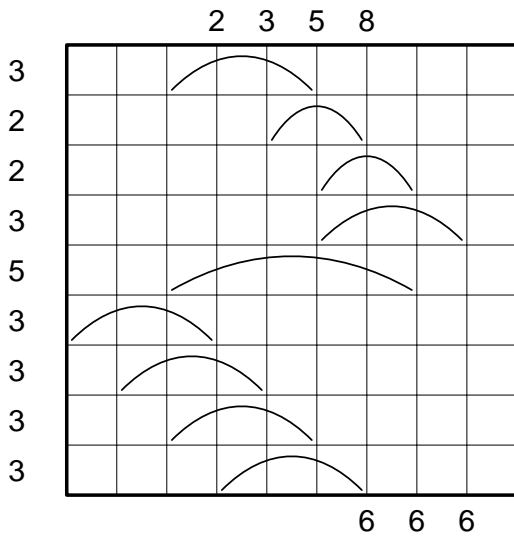
4.6 abknickende Bahnhöfe



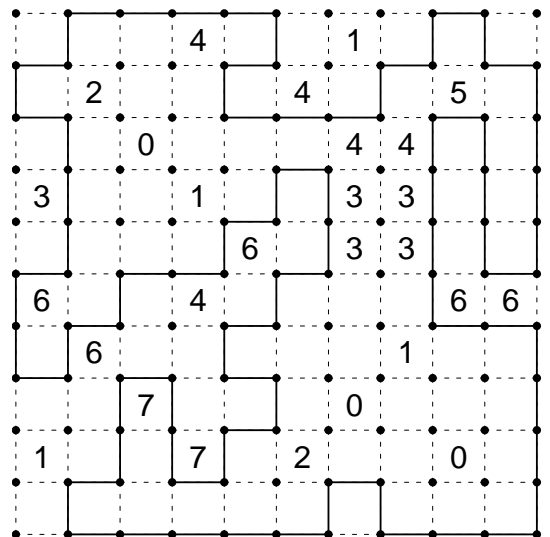
4.7 Pentomino Einpunkt



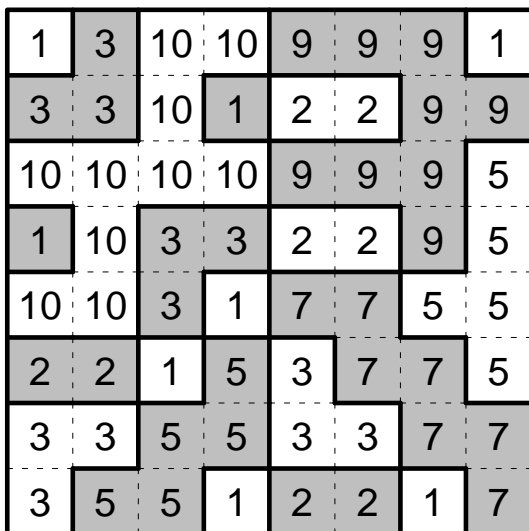
4.8 Doppelblock



4.9 Regenschirme



4.10 Ecken-Kanten-Rundweg



4.11 Kariertes Fillomino Knapp Daneben



4.12 Kreuzworteinbau

	1	1		6			
3	5	2	4	1	6	3	
	4	1	3	2	5	6	
3	1	6	2	3	4	5	
	6	5	1	4	3	2	4
3	2	3	5	6	1	4	
	3	4	6	5	2	1	3
	2	0	1	6			

4.13 Hochhäuser Knapp Daneben

2	2	22	3	3	2	3	3
22	22	22	22	3	2	3	1
3	3	3	22	22	1	4	2
22	22	22	22	2	4	4	2
2	22	22	22	2	4	1	3
2	22	1	22	22	1	3	3
1	3	2	3	22	22	2	2
3	3	2	3	3	22	22	22

4.14 Kariertes Fillomino

				8						
		4	4							
		2	2	2						
		1	3	5	7					
		8	7	4	9	2				
		5	3	4	8	1	1			
		3	2	5	1	7	8	9		
		9	6	8	3	4	3	5	4	
		1	8	2	6	3	7	4	9	5

4.15 Pyramide

			20	16		16	18	12		20	16									
		5	4	1		20	7	9	4		12	5	7	6						
	20	5	9	6		22	16	9	5	2		21	17	9	8	4				
	16	1	7	2	6		23	22	4	5	8	3	1	2						
						20	16	4	9	7		9	1	6	2	20	16			
		23	4	2	3	7	6	1		8		21	11	3	1	9	8			
		14	9	5		20	16	14	9	2	3		20	16	13	7	6			
		28	7	9	4	8		11	22	5	1	7	3	4	2					
								8	21	5	2	1		22	7	9	6	20	16	
		38	7	9	8	6	3	5		21		15		13	4	1	3	7		
		8	1	5	2		20	5	7	8		19		2	8	9				
								8	7	1		16		2	9	5		13	4	9

4.16 Kakuro

			?	?	?	?	?	?	?				
			2	3	1	2	3	1	2				
			A	B	C	B	A	B	C				
			?	?	?	?	?	?	?				
	?	3	?	C	A	A	A	B	B	B			
?	A	?	B	?	C	C	A	A	C	B	A		
				C	C	B	C	C	B	A			
				1	6	B	C	C	C	C	C		
?	?	?	?	?	?	B	B	C	B	A	B	B	
				?	?	?	A	C	C	C	C	B	B
?	B	?	A	?	C	C	B	C	C	A	B		

4.17 ABC-Box

2	2	7	7	1	7	2	2	3	3
1	3	7	7	2	7	4	5	2	3
3	3	7	3	2	7	4	5	2	1
2	7	7	3	7	7	4	5	3	3
2	1	2	3	7	7	4	5	6	3
1	7	2	7	2	2	1	5	6	1
2	7	1	7	7	7	7	6	6	5
2	7	5	5	5	5	7	6	5	5
11	7	7	7	7	5	7	6	5	5
11	11	11	11	11	11	11	11	11	11

4.18 Rundweg-Fillomino

B	E	S	E	S	E	L	E	I	N	E	D	E
	N	E	L	E	L	E	R	E	S	T	E	L
E	L	A	E	S	E	A	I	S	E	N	L	E
S	E	N	O		N	D	E	A	N	B	E	I
E	V	E	D	E	L	E						
L	E	N										

4.19 Pentowords

		3	1			3		3	1		3	2	97
3	2		2	3			2			2			
1		1		1		3		1		1		3	11
		2		2				2					6
	3		3			1				1	3		20
	1	2				2				2			16
								1					
		3	1			2							
		20	16			20		16			6	5	

4.20 Summon