

Lösungen zu Runde 1: Willkommen

Rätselautor: Roland Voigt

1.1 Magnetplatten

+		3	2	1	3	3	3	4	2
	-	4	1	2	3	1	4	2	4
3	3	-	+			+	-	+	-
3	2	+		-	+	-	+		
3	4	-		+	-	+	-	+	-
2	2			-			+	-	+
3	1	+			+			+	-
1	3	-	+		-		-		
4	2	+	-		+		+	-	+
2	4	-			-	+	-	+	-

1.3 Zeltlager

	2	2	3	1	2	1	3	2	1	3
2		↑	△				△	↑		
1							↑		△	↑
2	↑		△	↑	↑		△			
2	△				△					↑
1		↑					↑			△
3		△			△		△			↑
1		↑		↑	↑					△
3		△		△				△		
2	↑				↑	△		↑	↑	△
3	△	↑	△				↑	△		

1.2 Dominos

1	3	3	0	4	4	5	1
1	5	2	0	6	1	2	5
0	5	3	2	2	6	6	0
0	3	1	6	4	5	4	6
4	6	0	0	2	4	3	3
5	6	4	1	6	2	3	2
5	4	5	1	1	0	3	2

1.4 Rundweg

			1			0		3
1	1		3			1		
3								
	0		2	3		3		
						2		
1		1	3					3
2					2			
2		3				3	2	

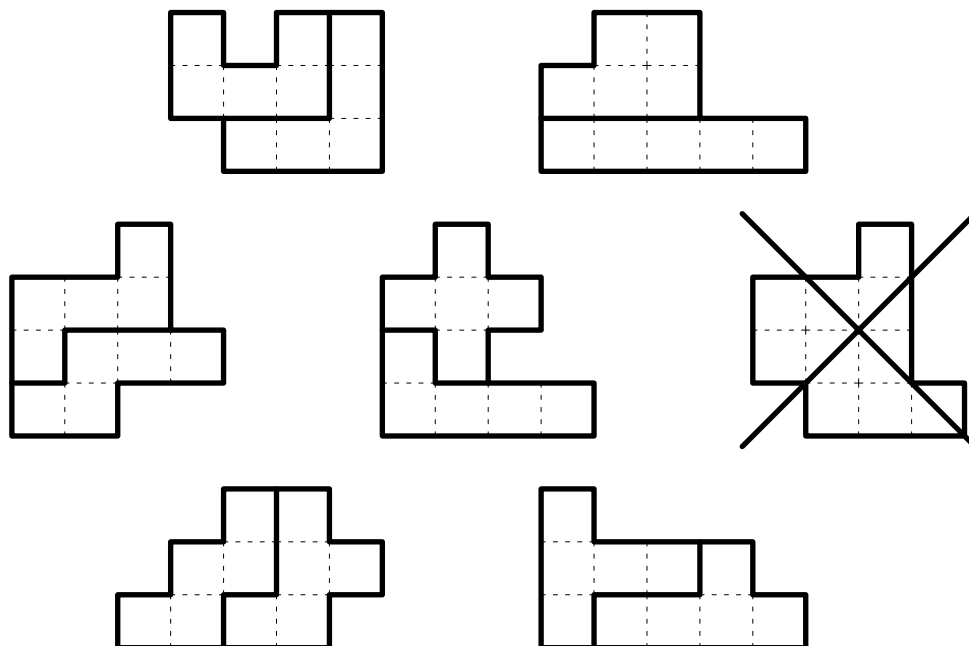
1.5 Kakuro

			14	16	19			11	13
	16	1	7	8	27		16	7	9
34	4	7	9	6	8	7	7	3	4
8	2	6	11	5	3	2	1		
	11	8		29	8	7	1	11	15
13	6	7	16	7	5	4	3	9	
26	5	1	7	9	4	14	8	6	
		12	6	4	2	13		22	9
	25	3	5	8	9	6	5	1	
13	5	8	27	3	1	6	9	8	
4	3	1		20	3	9	8		

Lösungen zu Runde 2: Pentominos

Rätselautoren: Ulrich Voigt (2.1-2.7), Roland Voigt (2.8)

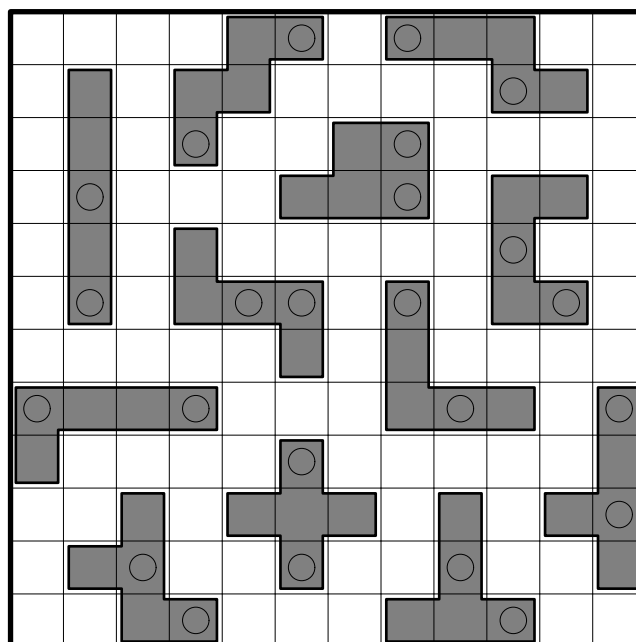
2.1 Pentomino-Paare



2.2 Pentomino-Wörter

(R)	E	D	N	A	A	P	I
Z	I	G	E	R	I	T	S
B	E	I	T	G	L	S	(I)
E	R	Z	E	E	M	E	G
R	I	B	R	Z	(E)	M	N
P	(N)	A	B	E	U	G	O
D	T	A	K	T	A	O	L
F	E	R	P	I	K	A	A

2.4 Pentomino-Inseln



2.3 Pentomino-Zerlegung

2		2	2			2	2	2
2		2				2	2	
2			2	2			2	
			2	2		2	2	2
	2			2				2
		2	2	2			2	2

2.5 Pentomino-Zwilling

L	Z	I	L	I	U
Y	Y	T	L	T	U
Y	F	T	X	U	W
Z	F	X	W	X	V
N	F	N	I	I	W
V	N	V	V	L	P

Y	P	W	Y	W	N
Y	P	X	I	W	P
L	Z	X	Z	X	N
T	T	Z	Z	F	U
U	P	F	I	F	N
P	L	T	V	V	U

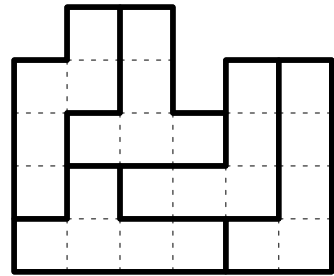
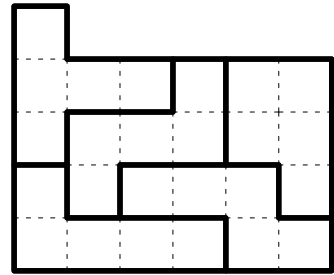
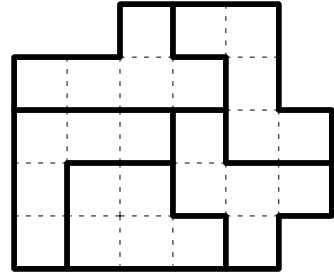
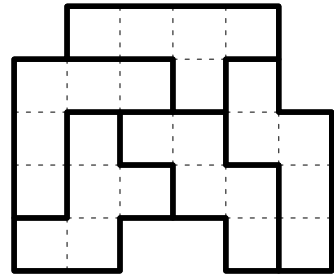
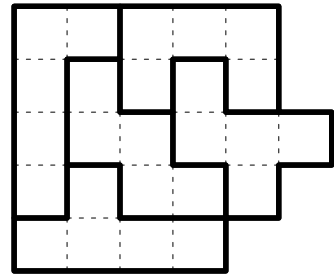
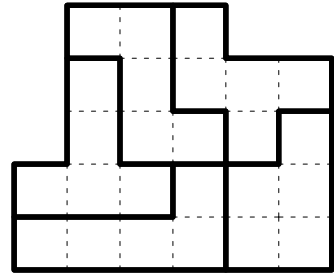
2.6 Pentomino-Mäander

	1	3	4	4	4	2	2	2	4	4	4
1											
3									T		
3											
6											
4				X		X					
2			F								
2		Y									
3											
2											
2										P	
3											

2.7 Japanische Summen mit Pentominos

												14								
												12	7	2						
												10	10	15	23	4	2	1	21	
												28	4	18	13	5	21	4	25	7
9	1	15			5	4			1			6	2	7						
	23	5			7	1		2	6	4	3			5						
4	15	9		4			2	6	7		5	1	3							
	26	2		5	1	3	7	4	6					2						
	8	20		2	6				3	1	7	5	4							
	24	4		1	3	6	5	2	7			4								
3	11	14		3		7	4		5	2	6	1								
17	2	9		7	4	5	1		2			3	6							
6	8	11		6			3	5		4	7									

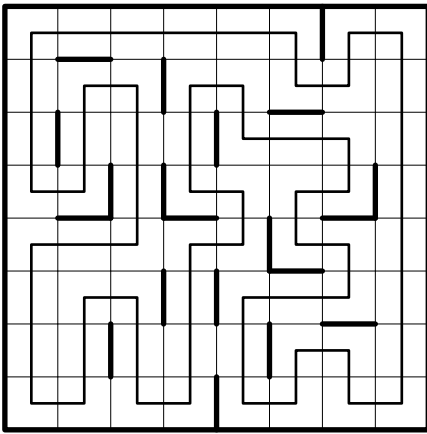
2.8 Bonus-Zerlegungen



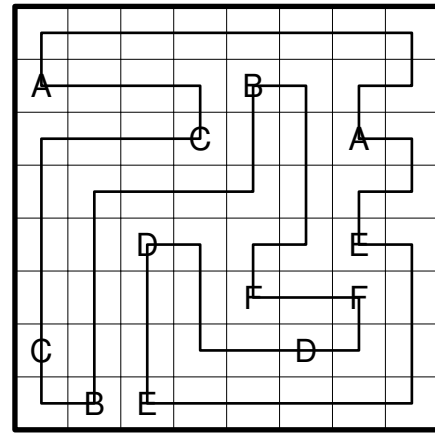
Lösungen zu Runde 3: Sprint I - Rundwege

Rätselautoren: Roland Voigt (3.1, 3.2, 3.3, 3.6), Ulrich Voigt (3.4, 3.5)

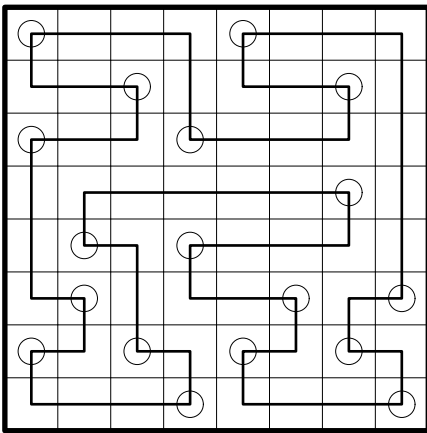
3.1 Simples Labyrinth



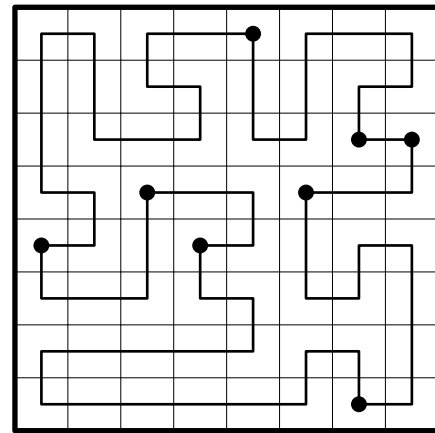
3.4 Buchstabenpaare



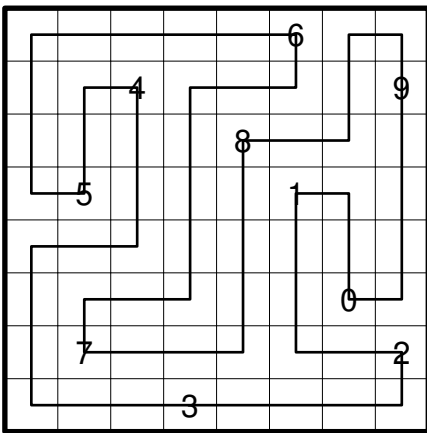
3.2 Zwischenknick



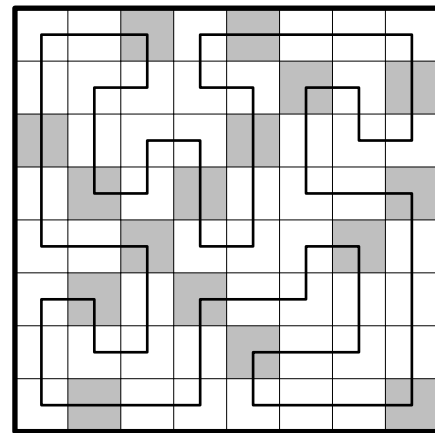
3.5 Winkel



3.3 Stationen



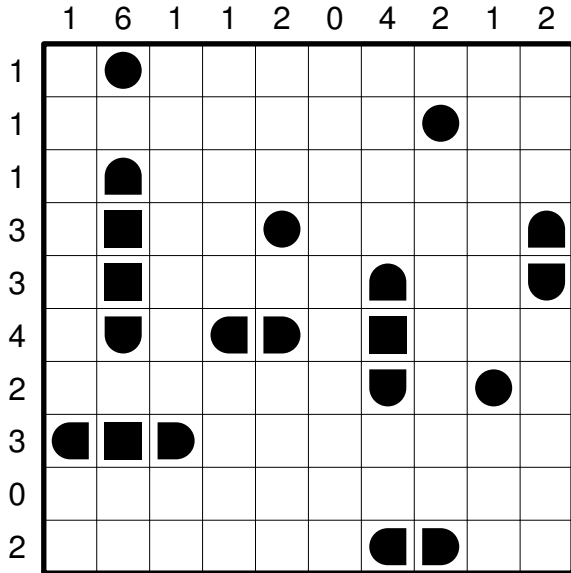
3.6 Vier Schritte



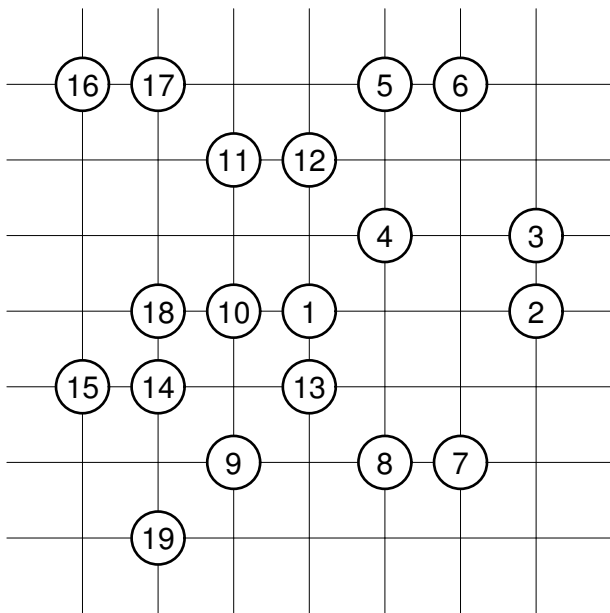
Lösungen zu Runde 4: Gemischte Rätsel

Rätselautoren: Roland Voigt (4.2, 4.3, 4.4, 4.5, 4.6, 4.7, 4.10, 4.11, 4.17), Ulrich Voigt (4.1, 4.8, 4.13, 4.16), Richard Stolk (4.9, 4.12, 4.14, 4.18), Robert Bearda (4.15)

4.1 Schiffe Versenken



4.4 Hiroimono



4.2 Arithmetik

$$\boxed{5} \times \boxed{6} - \boxed{4} = 26$$

- × +

$$\boxed{1} \times \boxed{7} + \boxed{9} = 16$$

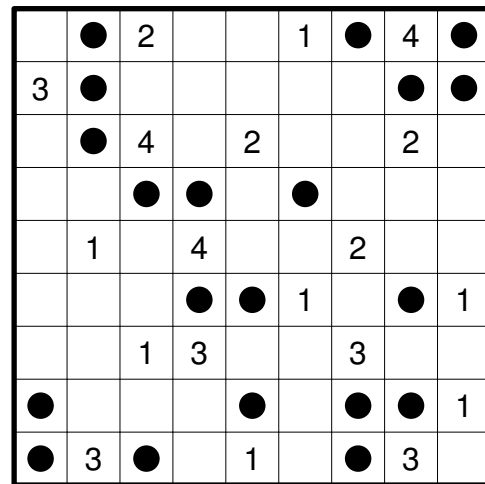
+ - /

$$\boxed{8} / \boxed{2} + \boxed{3} = 7$$

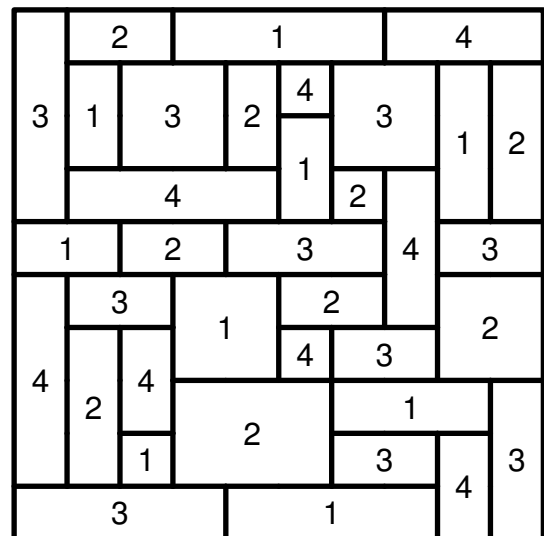
= = =

12 40 7

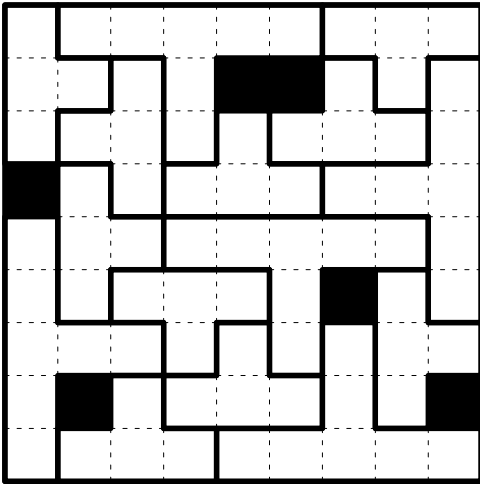
4.3 Minesweeper



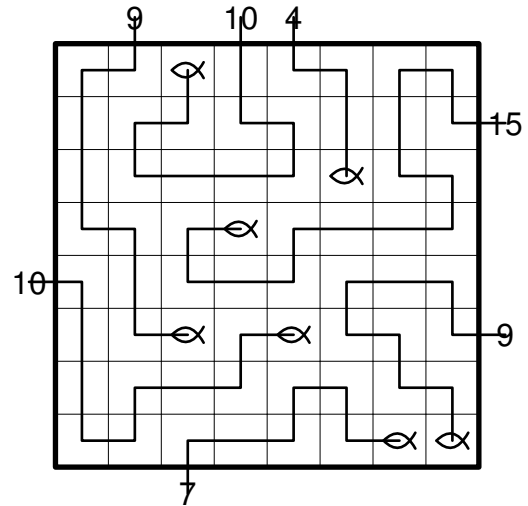
4.5 Landkarte



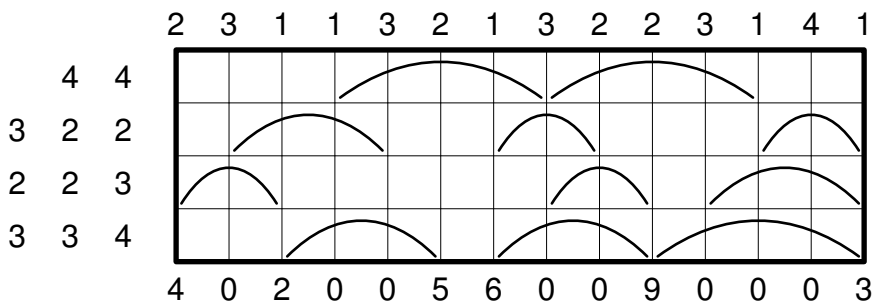
4.6 T-Zerlegung



4.7 Angler



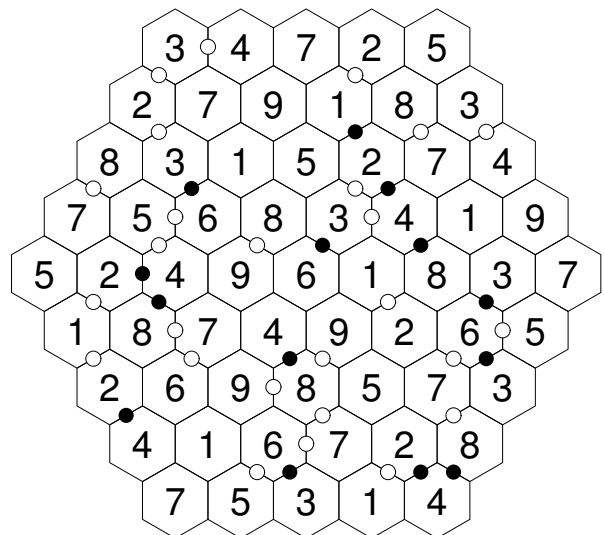
4.8 Regenschirme



4.9 Chaos-Sudoku-Variante

5	3	1	6	2	4	7
2	1	4	5	3	7	6
7	4	6	1	5	3	2
3	6	2	4	7	5	1
4	7	3	2	1	6	5
1	5	7	3	6	2	4
6	2	5	7	4	1	3

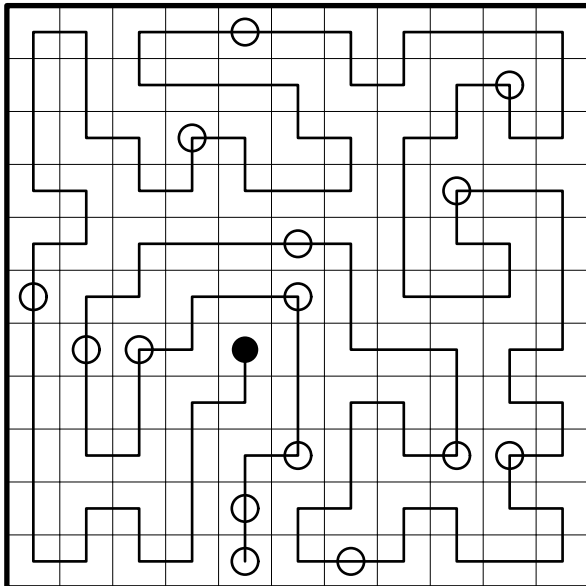
4.10 Hexagonales Kropki



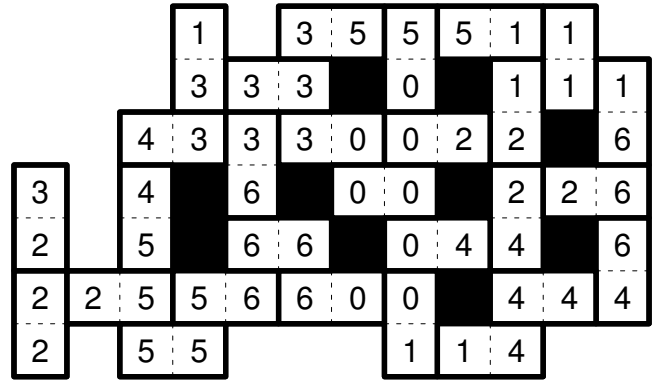
4.11 Treppe

0	1	2	4	5	6	7	2	3
1	4	3	5	2	3	2	1	4
2	7	5	6	3	7	4	5	6
3	8	7	2	4	6	5	3	3
4	5	6	3	4	5	6	4	2
3	2	3	2	1	2	5	6	3
4	3	4	3	2	5	4	5	4
5	7	6	4	3	4	3	7	8
6	5	6	5	6	7	5	6	9

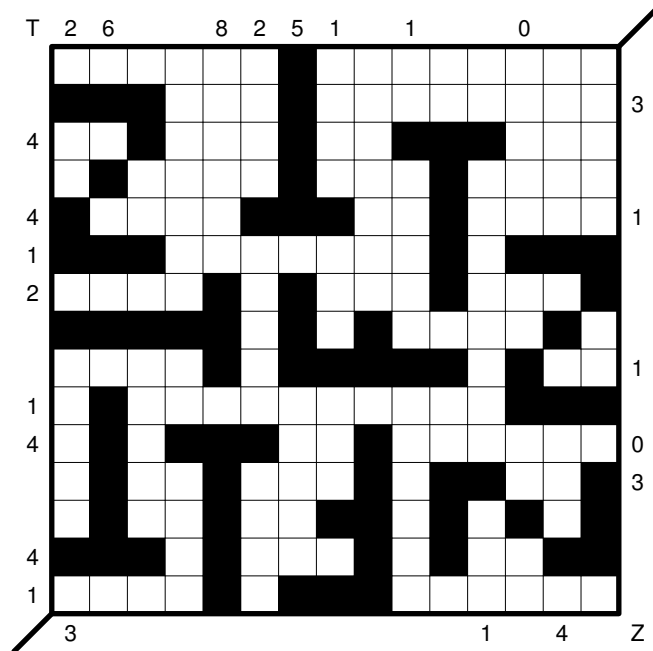
4.13 Kette



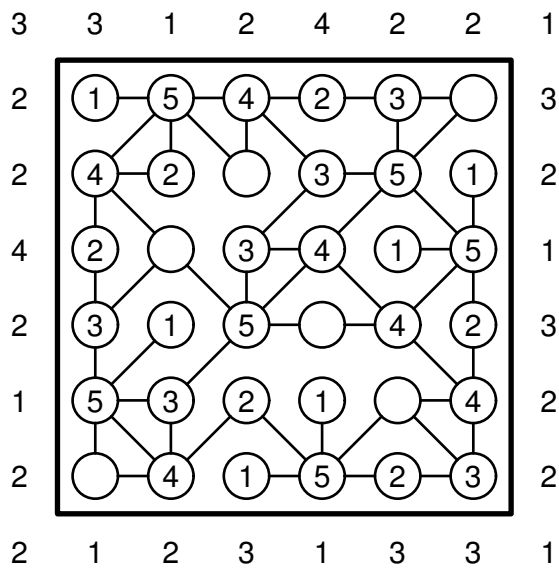
4.12 Dominofigur



4.14 FTZ



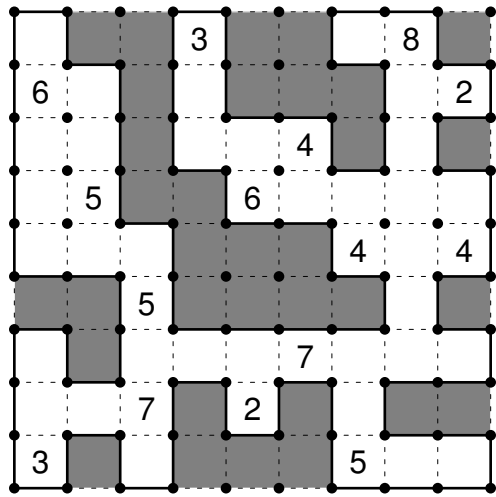
4.15 Hochhäuser und Speichen



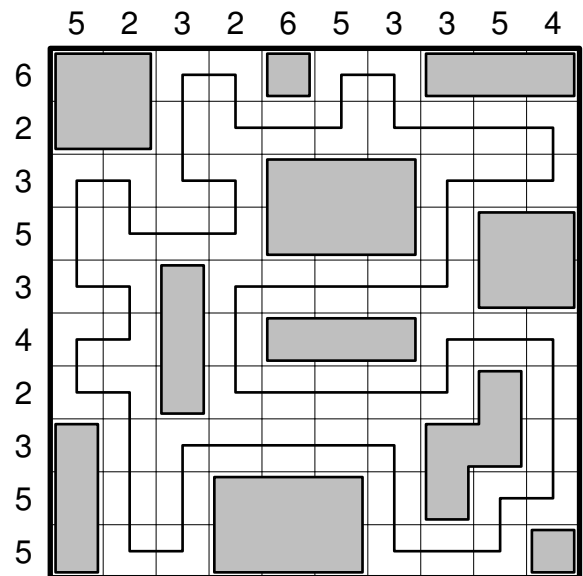
4.17 Gebietssummen

¹³ 5	7	¹² 8	1	3	¹⁴ 4	6	2
¹³ 3	1	²⁶ 5	8	7	⁸ 6	2	¹⁰ 4
8	¹⁰ 4	3	¹² 7	6	2	5	1
2	3	¹⁵ 7	5	¹⁶ 8	¹² 1	4	6
¹⁴ 6	8	2	4	5	3	1	¹⁰ 7
²³ 4	5	6	2	⁸ 1	7	¹⁹ 8	3
⁸ 7	2	⁷ 1	6	¹³ 4	²⁵ 5	3	8
1	6	4	3	2	8	7	5

4.16 Höhle



4.18 Stadtbau



Lösungen zu Runde 5: Labyrinth

Rätselautor: Roland Voigt

5.1 Fillomino

1	3	3	1	4	4
4	3	1	2	2	4
4	4	3	1	3	4
4	1	3	2	3	3
2	2	3	2	4	4
3	3	2	1	2	4
5	3	2	4	2	4
5	5	5	4	4	1
4	4	5	4	3	3
2	4	2	1	4	3
2	4	2	4	4	4

5.3 Buchstabensalat

	D		C			
C		C	B		A	D
	D	B		C		A
	C	A			D	B
D			D	A	B	C
	B		A	D	C	
	A	D	C	B		
			C	B		

5.4 Buchstabensalat

		B				
	D		C		A	B
A			A	D	B	C
	C	B		A	D	
	B	D		C		A
	A	C	B			D
		A	D	B	C	
A						D

5.2 Fillomino

3	3	2	5	1	3	3	2	3	4	4
3	1	2	5	2	4	3	2	3	3	4
2	3	3	5	2	4	4	4	2	2	4
2	1	3	5	5	1	5	5	5	4	1
3	3	2	3	2	2	5	2	3	4	4
3	1	2	3	3	1	5	2	3	3	4

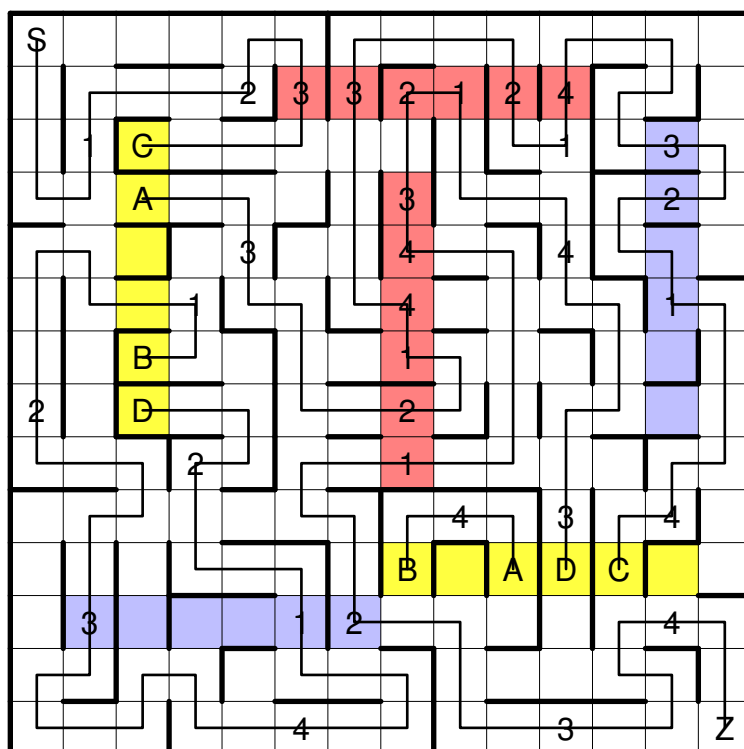
5.5 Magische Spirale

		1	2	3	
	2	3			1
3				1	2
2	1				3
1			3	2	
	3	2	1		

5.6 Magische Spirale

2			3	1	
1			2	3	
	1	3			2
	3	2	1		
	2	1			3
3				2	1

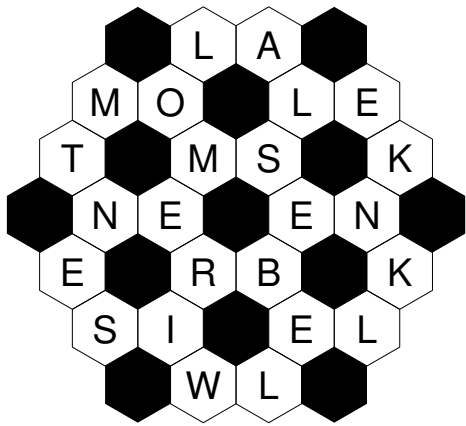
5.7 Labyrinth



Lösungen zu Runde 6: Sprint II - Kreuzwortwaben

Rätselautor: Roland Voigt

6.1 Kreuzwortwaben



Lösungen zu Runde 7: Knapp daneben

Rätselautoren: Ulrich Voigt (7.1, 7.2, 7.3, 7.6, 7.8), Roland Voigt (7.4, 7.5, 7.7)

7.1 Rechtecke

		3		3		
1						0
		2	4			
2		4	3			4
		6		3		

7.3 Schlange

	6	5	3	5	4	6	5	5	3	6
9	[Snake path]									
4	[Snake path]									
4	[Snake path]									
7	[Snake path]									
3	[Snake path]									
3	[Snake path]									
5	[Snake path]									
1	[Snake path]									
9	[Snake path]									
3	[Snake path]									

7.7 Hochhäuser

	3		1			
3	3	1	4	5	2	6
3	2	3	1	4	6	5
	6	5	2	3	4	1
3	5	4	6	1	3	2
5	1	2	3	6	5	4
	4	6	5	2	1	3
	4		3		2	5

7.2 Minisummen

17	6	16	15	7	4	10
5				4	0	
9		7				3
9	1		9			
12	6		5			
9		8		2		

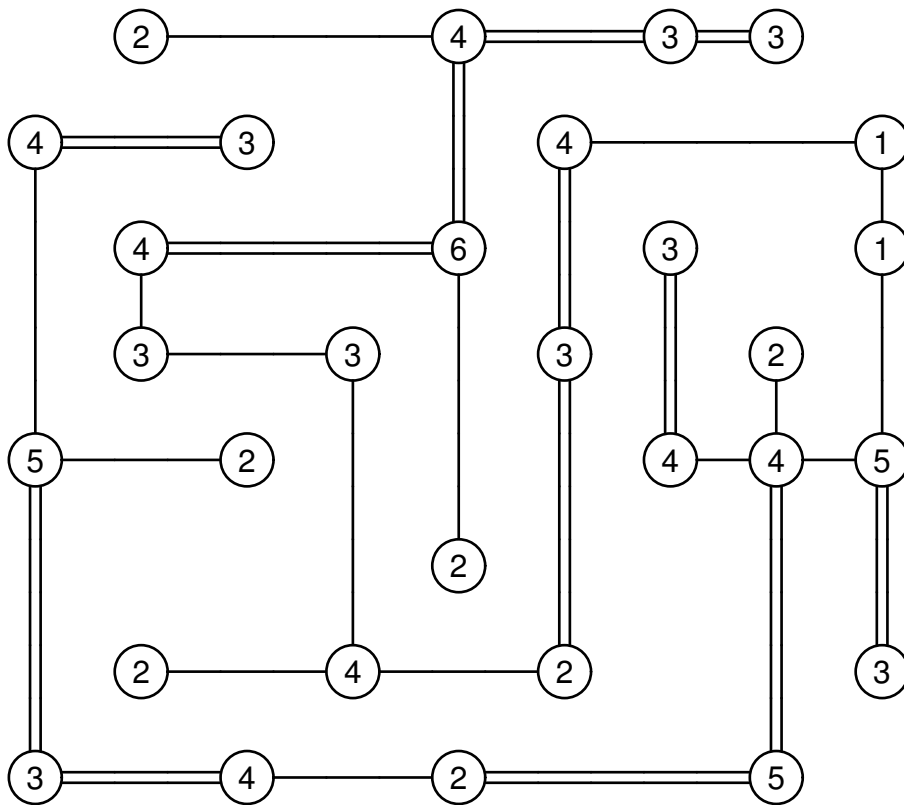
7.5 Magnetplatten

+		3	4	3	4	2	1	1	3	4	5
	-	3	3	3	4	2	4	1	5	3	2
5	5	-		+	-	+	-		+	-	+
3	3	+							-	+	-
4	3	-	+		+	-			-	+	-
6	1	+		+	-	+			+	-	+
4	6	-		-	+	-			-	+	-
2	3	+	-								-
5	1				+	-	+		+	-	+
1	3		+	-			-		-	+	-
2	2	+	-				+				+
4	5	-	+			-	+	-	+	-	

7.6 Produkt-Kakuro

	3	20	29		59	4		27	35
11	1	3	4	14	5	3	7	1	6
15	2	7	1	7	6	1	11	4	3
	11	5	13		7	2	1	41	3
9	2	4	9	41	4	2	5	1	19
85	6	1	2	7	209	2	7	5	3
	19	41	104		1	5	3	7	49
39	5	2	4	31	5	1	6	6	17
13	4	3	5		4	1	29	2	5
8	1	7	21		5	4	25	4	1

7.4 Brücken



7.8 Bonus-Blackouts

7	8	-	2		+	3	1	=	5		7	+	4	9
---	---	---	---	--	---	---	---	---	---	--	---	---	---	---

(4	8	/	6		4)	×	3	6	=		2	8
---	---	---	---	---	--	---	---	---	---	---	---	--	---	---

3		5	×	1	4	=	5		1	8	-	3	×	9
---	--	---	---	---	---	---	---	--	---	---	---	---	---	---

2	7	×	3	-	9		4	=	4	6	-	5		8
---	---	---	---	---	---	--	---	---	---	---	---	---	--	---

5	8		+	6	3	7	=	7	1	9	-	2		5
---	---	--	---	---	---	---	---	---	---	---	---	---	--	---

8	5	/		7	+	1	8	/	2		1	=	1	2
---	---	---	--	---	---	---	---	---	---	--	---	---	---	---

Lösungen zu Runde 8: Kipplabyrinth

Rätselautoren: Roland Voigt, Ulrich Voigt

8.1 Kipplabyrinth

Die kürzestmögliche Lösung besteht aus acht Etappen und insgesamt 104 Zügen:

- B: NWSWWNONNO
- A: WWS
- B: WS
- A: WW
- B: SWSSONOSWNNWNONO
- A: NON
- B: WSSOSWNNNO
- A: WSS
- B: NOOSSOSSWSONWWN
- A: ONW
- B: SOOSONWSSWWN
- A: SSOO
- B: SOONNOSWWNW
- A: NWN
- B: WN
- A: WSO

Lösungen zu Runde 9: Finale

Rätselautoren: Roland Voigt (9.1, 9.2, 9.3, 9.6), Ulrich Voigt (9.4, 9.7), Robert Bearda (9.5)

9.1 L-Zerlegung

D	C	A	C	B	D	B	C	B	C	A	C
A	D	C	A	D	C	D	A	D	A	D	A
B	A	D	B	C	B	C	B	A	D	B	D
A	C	A	D	B	A	B	C	D	B	C	A
C	B	D	A	D	B	D	A	C	A	B	D
B	D	C	B	A	C	A	C	B	D	C	B

9.2 Vier Winde

A 10x10 grid puzzle. Numbers are placed in various cells, and lines connect them to other cells, representing wind directions. The numbers and their connections are: 5 (top-left), 8 (top-right), 5 (row 2, col 4), 2 (row 2, col 9), 10 (row 3, col 5), 7 (row 4, col 2), 2 (row 4, col 7), 4 (row 4, col 9), 4 (row 5, col 1), 1 (row 5, col 4), 7 (row 5, col 6), 6 (row 5, col 10), 7 (row 6, col 3), 5 (row 7, col 8), 2 (row 7, col 10), 5 (row 8, col 8), 6 (row 8, col 10), 10 (row 9, col 4).

9.4 Tapa

A 10x10 Tapa puzzle grid. Numbers and slash indicators are placed in cells. The indicators are: 1/1 (row 1, col 3), 1/2 (row 1, col 7), 3 (row 2, col 1), 2/4 (row 2, col 5), 1/2 (row 2, col 8), 1/2 (row 2, col 9), 4 (row 4, col 1), 2/2 (row 4, col 7), 5 (row 4, col 8), 1/2 (row 5, col 2), 3/3 (row 5, col 7), 2/3 (row 5, col 9), 1/1 (row 5, col 6), 1/2 (row 6, col 8), 2/2 (row 6, col 9), 2/3 (row 8, col 2), 2/2 (row 9, col 6), 1/3 (row 9, col 8), 2 (row 9, col 10).

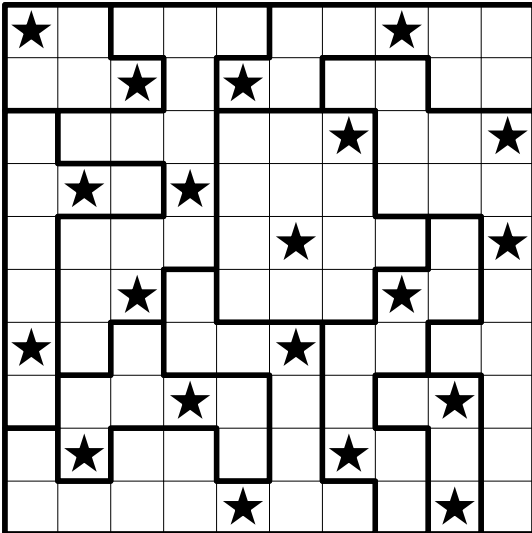
9.3 Bahnhöfe

A 10x10 grid puzzle. Numbers are placed in cells, and paths connect them. The numbers and their connections are: 4 (row 2, col 9), 5 (row 3, col 4), 3 (row 4, col 2), 1 (row 6, col 3), 2 (row 8, col 9).

9.5 Sudoku ohne Berührungen

6	9	7	4	8	5	1	2	3
3	1	5	2	7	6	8	4	9
2	8	4	3	9	1	7	5	6
9	3	1	5	4	2	6	8	7
5	6	8	7	1	3	4	9	2
4	7	2	9	6	8	5	3	1
1	5	6	8	3	9	2	7	4
8	4	9	1	2	7	3	6	5
7	2	3	6	5	4	9	1	8

9.6 Doppelstern



9.7 Japanische Summen

			10		14	3			5	4
		1	24	7	1	18	5	21	3	9
		9	4	3	24	9	23	5	19	6
4	9	6	4		6	3			1	5
	11	16	6	3	2		7	5	4	
16	6	4		7	5	1	3		6	4
	6	18		5	1		2	6	7	3
3	20	5	1	2		4	6	7	3	5
18	2	5		6	7	5		2		4
8	11	9	7	1		2	5	4		6
	2	25	2			6	4	3	5	7
14	1	8		4	3	7		1		2